

TMEM16K antibody - C-terminal region

Rabbit Polyclonal Antibody

Catalog # AI12789

Product Information

Application	WB
Primary Accession	Q9NW15
Other Accession	NM_018075 , NP_060545
Reactivity	Human, Mouse, Rat, Rabbit, Zebrafish, Pig, Dog, Guinea Pig, Horse, Bovine
Predicted	Human, Mouse, Rat, Zebrafish, Bovine
Host	Rabbit
Clonality	Polyclonal
Calculated MW	76329

Additional Information

Gene ID	55129
Alias Symbol	FLJ10375, MGC47890, SCAR10, TMEM16K
Other Names	Anoctamin-10, Transmembrane protein 16K, ANO10, TMEM16K
Format	Liquid. Purified antibody supplied in 1x PBS buffer with 0.09% (w/v) sodium azide and 2% sucrose.
Reconstitution & Storage	Add 50 ul of distilled water. Final anti-TMEM16K antibody concentration is 1 mg/ml in PBS buffer with 2% sucrose. For longer periods of storage, store at 20°C. Avoid repeat freeze-thaw cycles.
Precautions	TMEM16K antibody - C-terminal region is for research use only and not for use in diagnostic or therapeutic procedures.

Protein Information

Name	ANO10
Synonyms	TMEM16K
Function	Does not exhibit calcium-activated chloride channel (CaCC) activity. Can inhibit the activity of ANO1.
Cellular Location	Cell membrane; Multi-pass membrane protein. Note=Shows predominantly an intracellular localization with a weak expression in the cell membrane
Tissue Location	Highly expressed in the brain. Intermediate levels in the retina and heart and low levels in the placenta, liver, lung, duodenum, kidney, testis and spleen. In brain areas, highest expression in the frontal and occipital cortices and in the

cerebellum. Lower expression in the fetal brain than in the adult brain

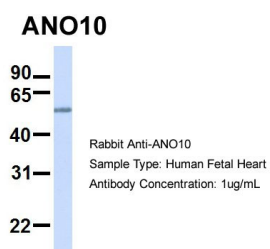
References

Ota,T.,(2004)Nat.Genet.36(1),40-45ReconstitutionandStorage:Forshorttermuse,storeat2-8Cupto1week.Forlongtermstorage,storeat-20Cinsmallaliquotstopreventfreeze-thawcycles.

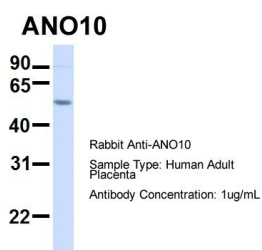
Images



WB Suggested Anti-TMEM16K Antibody Titration: 0.2-1 $\mu\text{g/ml}$
ELISA Titer: 1:62500
Positive Control: 293T cell lysate



Host: Rabbit
Target Name: ANO10
Sample Tissue: Human Fetal Heart
Antibody Dilution: 1.0 $\mu\text{g/ml}$



Host: Rabbit
Target Name: ANO10
Sample Tissue: Human Adult Placenta
Antibody Dilution: 1.0 $\mu\text{g/ml}$

Please note: All products are 'FOR RESEARCH USE ONLY. NOT FOR USE IN DIAGNOSTIC OR THERAPEUTIC PROCEDURES'.