

MLSTD1 antibody - C-terminal region

Rabbit Polyclonal Antibody

Catalog # AI12790

Product Information

| | |
|--------------------------|---|
| Application | WB |
| Primary Accession | Q96K12 |
| Other Accession | NM_018099 , NP_060569 |
| Reactivity | Human, Mouse, Rat, Rabbit, Zebrafish, Pig, Dog, Guinea Pig, Horse, Bovine |
| Predicted | Human, Mouse, Rat, Zebrafish, Chicken, Dog, Bovine |
| Host | Rabbit |
| Clonality | Polyclonal |
| Calculated MW | 59438 |

Additional Information

| | |
|-------------------------------------|---|
| Gene ID | 55711 |
| Alias Symbol | FAR2, FLJ10462, MLSTD1, SDR10E2 |
| Other Names | Fatty acyl-CoA reductase 2, 1.2.1.n.2, Male sterility domain-containing protein 1, FAR2, MLSTD1 |
| Format | Liquid. Purified antibody supplied in 1x PBS buffer with 0.09% (w/v) sodium azide and 2% sucrose. |
| Reconstitution & Storage | Add 50 ul of distilled water. Final anti-MLSTD1 antibody concentration is 1 mg/ml in PBS buffer with 2% sucrose. For longer periods of storage, store at 20°C. Avoid repeat freeze-thaw cycles. |
| Precautions | MLSTD1 antibody - C-terminal region is for research use only and not for use in diagnostic or therapeutic procedures. |

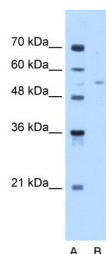
Protein Information

| | |
|--------------------------|--|
| Name | FAR2 (HGNC:25531) |
| Function | Catalyzes the reduction of saturated but not unsaturated C16 or C18 fatty acyl-CoA to fatty alcohols (FAs) (PubMed: 15220348). A lower activity can be observed with shorter fatty acyl-CoA substrates (PubMed: 15220348). Can produce very long-chain and ultra long-chain FAs, regardless of whether they have a straight or branched chain (PubMed: 35238077). Involved in the production of ether lipids/plasmalogens and wax monoesters whose synthesis requires FAs as substrates (PubMed: 24108123 , PubMed: 35238077). |
| Cellular Location | Peroxisome membrane; Single-pass membrane protein |

References

Cheng,J.B.(2004)J.Biol.Chem..279(36),37798-37807ReconstitutionandStorage:Forshorttermuse,storeat2-8Cupto1week.Forlongtermstorage,storeat-20Cinsmallaliquotstopreventfreeze-thawcycles.

Images



WB Suggested Anti-MLSTD1 Antibody Titration: 0.2-1
 $\mu\text{g/ml}$
Positive Control: Jurkat cell lysate

Please note: All products are 'FOR RESEARCH USE ONLY. NOT FOR USE IN DIAGNOSTIC OR THERAPEUTIC PROCEDURES'.