

Tmem33 antibody - middle region

Rabbit Polyclonal Antibody

Catalog # AI12791

Product Information

Application	WB
Primary Accession	Q9Z142
Other Accession	NM_001034198 , NP_001029370
Reactivity	Human, Mouse, Rat, Rabbit, Zebrafish, Pig, Dog, Guinea Pig, Horse, Bovine
Predicted	Human, Mouse, Rat, Zebrafish, Pig, Chicken, Dog, Guinea Pig, Bovine
Host	Rabbit
Clonality	Polyclonal
Calculated MW	27983

Additional Information

Gene ID	59303
Alias Symbol	Tmem33
Other Names	Transmembrane protein 33, Protein DB83, Tmem33, Db83
Format	Liquid. Purified antibody supplied in 1x PBS buffer with 0.09% (w/v) sodium azide and 2% sucrose.
Reconstitution & Storage	Add 50 ul of distilled water. Final anti-Tmem33 antibody concentration is 1 mg/ml in PBS buffer with 2% sucrose. For longer periods of storage, store at 20°C. Avoid repeat freeze-thaw cycles.
Precautions	Tmem33 antibody - middle region is for research use only and not for use in diagnostic or therapeutic procedures.

Protein Information

Name	Tmem33
Synonyms	Db83
Function	Acts as a regulator of the tubular endoplasmic reticulum (ER) network by modulating intracellular calcium homeostasis. Mechanistically, stimulates PKD2 calcium-dependent activity (By similarity). Suppresses the RTN3/4-induced formation of the ER tubules. Positively regulates PERK-mediated and IRE1-mediated unfolded protein response signaling. Plays an essential role in VEGF-mediated release of Ca(2+) from ER stores during angiogenesis. Also plays a role in the modulation of innate immune signaling through the cGAS-STING pathway by interacting with RNF26. Participates in lipid metabolism by acting as a downstream effector of the pyruvate

kinase/PKM. Forms a complex with RNF5 to facilitate polyubiquitination and subsequent degradation of SCAP on the ER membrane (By similarity).

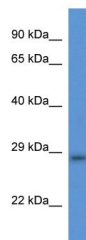
Cellular Location

Endoplasmic reticulum membrane {ECO:0000250|UniProtKB:P57088}; Multi-pass membrane protein. Melanosome {ECO:0000250|UniProtKB:P57088}. Nucleus envelope {ECO:0000250|UniProtKB:P57088}. Note=Co-localizes with RTN4 at the ER sheets. {ECO:0000250|UniProtKB:P57088}

Tissue Location

Highly expressed in the liver and significantly in brain, lungs and kidneys

Images



WB Suggested Anti-Tmem33 Antibody Titration: 1.0 µg/ml
Positive Control: Rat Heart

Please note: All products are 'FOR RESEARCH USE ONLY. NOT FOR USE IN DIAGNOSTIC OR THERAPEUTIC PROCEDURES'.