

TMEM30A Antibody - middle region

Rabbit Polyclonal Antibody

Catalog # AI12793

Product Information

Application	WB, IHC
Primary Accession	Q9NV96
Other Accession	NM_018247 , NP_060717
Reactivity	Human, Mouse, Rat, Zebrafish, Dog, Guinea Pig, Horse, Bovine
Predicted	Human, Mouse, Rat, Rabbit, Zebrafish, Pig, Dog, Horse, Bovine
Host	Rabbit
Clonality	Polyclonal
Calculated MW	40684

Additional Information

Gene ID	55754
Alias Symbol	C6orf67, CDC50A, FLJ10856
Other Names	Cell cycle control protein 50A, P4-ATPase flippase complex beta subunit TMEM30A, Transmembrane protein 30A, TMEM30A, C6orf67, CDC50A
Format	Liquid. Purified antibody supplied in 1x PBS buffer with 0.09% (w/v) sodium azide and 2% sucrose.
Reconstitution & Storage	Add 50 ul of distilled water. Final anti-TMEM30A antibody concentration is 1 mg/ml in PBS buffer with 2% sucrose. For longer periods of storage, store at 20°C. Avoid repeat freeze-thaw cycles.
Precautions	TMEM30A Antibody - middle region is for research use only and not for use in diagnostic or therapeutic procedures.

Protein Information

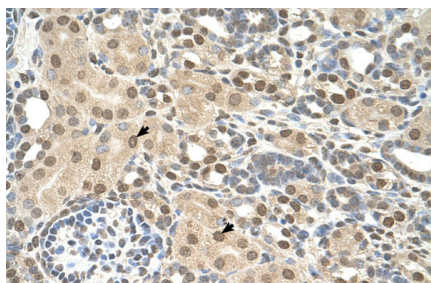
Name	TMEM30A (HGNC:16667)
Synonyms	C6orf67, CDC50A
Function	Accessory component of a P4-ATPase flippase complex which catalyzes the hydrolysis of ATP coupled to the transport of aminophospholipids from the outer to the inner leaflet of various membranes and ensures the maintenance of asymmetric distribution of phospholipids. Phospholipid translocation also seems to be implicated in vesicle formation and in uptake of lipid signaling molecules. The beta subunit may assist in binding of the phospholipid substrate. Required for the proper folding, assembly and ER to Golgi exit of the ATP8A2:TMEM30A flippase complex. ATP8A2:TMEM30A may be involved

in regulation of neurite outgrowth, and, reconstituted to liposomes, predominantly transports phosphatidylserine (PS) and to a lesser extent phosphatidylethanolamine (PE). The ATP8A1:TMEM30A flippase complex seems to play a role in regulation of cell migration probably involving flippase-mediated translocation of phosphatidylethanolamine (PE) at the plasma membrane. Required for the formation of the ATP8A2, ATP8B1 and ATP8B2 P-type ATPase intermediate phosphoenzymes. Involved in uptake of platelet-activating factor (PAF), synthetic drug alkylphospholipid edelfosine, and, probably in association with ATP8B1, of perfosine. Also mediates the export of alpha subunits ATP8A1, ATP8B1, ATP8B2, ATP8B4, ATP10A, ATP10B, ATP10D, ATP11A, ATP11B and ATP11C from the ER to other membrane localizations.

Cellular Location

Membrane; Multi-pass membrane protein. Cell membrane. Golgi apparatus. Cytoplasmic vesicle, secretory vesicle membrane. Apical cell membrane

Images



Rabbit Anti-TMEM30A Antibody
Paraffin Embedded Tissue: Human Kidney
Cellular Data: Epithelial cells of renal tubule
Antibody Concentration: 4.0-8.0 µg/ml
Magnification: 400X

Please note: All products are 'FOR RESEARCH USE ONLY. NOT FOR USE IN DIAGNOSTIC OR THERAPEUTIC PROCEDURES'.