

Tmem106b antibody - C-terminal region

Rabbit Polyclonal Antibody

Catalog # AI12796

Product Information

Application	WB
Primary Accession	Q80X71
Other Accession	NM_027992 , NP_082268
Reactivity	Human, Mouse, Rat, Rabbit, Zebrafish, Pig, Dog, Guinea Pig, Horse, Bovine
Predicted	Human, Mouse, Chicken, Dog
Host	Rabbit
Clonality	Polyclonal
Calculated MW	31172

Additional Information

Gene ID	71900
Alias Symbol Other Names	2310036D22Rik, 5830455K21Rik, 6430519M21Rik, AI428776, AI661344 Transmembrane protein 106B, Tmem106b
Format	Liquid. Purified antibody supplied in 1x PBS buffer with 0.09% (w/v) sodium azide and 2% sucrose.
Reconstitution & Storage	Add 50 ul of distilled water. Final anti-Tmem106b antibody concentration is 1 mg/ml in PBS buffer with 2% sucrose. For longer periods of storage, store at 20°C. Avoid repeat freeze-thaw cycles.
Precautions	Tmem106b antibody - C-terminal region is for research use only and not for use in diagnostic or therapeutic procedures.

Protein Information

Name	Tmem106b
Function	In neurons, involved in the transport of late endosomes/lysosomes (PubMed: 25066864 , PubMed: 32160553). May be involved in dendrite morphogenesis and maintenance by regulating lysosomal trafficking (PubMed: 25066864). May act as a molecular brake for retrograde transport of late endosomes/lysosomes, possibly via its interaction with MAP6 (By similarity). In motoneurons, may mediate the axonal transport of lysosomes and axonal sorting at the initial segment (PubMed: 32160553). It remains unclear whether TMEM106B affects the transport of moving lysosomes in the anterograde or retrograde direction in neurites and whether it is particularly important in the sorting of lysosomes in axons or in dendrites (Probable). In neurons, may also play a role in the regulation of lysosomal size and

responsiveness to stress (PubMed:[25066864](#)). Required for proper lysosomal acidification (PubMed:[28728022](#)).

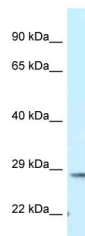
Cellular Location

Late endosome membrane; Single-pass type II membrane protein. Lysosome membrane; Single-pass type II membrane protein. Cell membrane {ECO:0000250|UniProtKB:Q9NUM4}; Single-pass type II membrane protein. Note=Colocalizes with LAMP1. A small fraction resides on the cell surface (By similarity). {ECO:0000250|UniProtKB:Q9NUM4, ECO:0000269|PubMed:23136129, ECO:0000269|PubMed:25066864}

Tissue Location

Expressed in the brain, in neurons (at protein level) (PubMed:25066864, PubMed:28728022, PubMed:29855382, PubMed:32160553, PubMed:32761777). Expressed in the spinal cord (at protein level) (PubMed:32160553).

Images



WB Suggested Anti-Tmem106b Antibody Titration: 1.0
µg/ml
Positive Control: Mouse Brain

Please note: All products are 'FOR RESEARCH USE ONLY. NOT FOR USE IN DIAGNOSTIC OR THERAPEUTIC PROCEDURES'.