

# Tcea3 antibody - C-terminal region

Rabbit Polyclonal Antibody

Catalog # AI12811

## Product Information

---

<b>Application</b>	WB
<b>Primary Accession</b>	<a href="#">P23881</a>
<b>Other Accession</b>	<a href="#">NM_011542</a> , <a href="#">NP_035672</a>
<b>Reactivity</b>	Human, Mouse, Rat, Rabbit, Zebrafish, Dog, Guinea Pig, Horse, Bovine
<b>Predicted</b>	Human, Mouse, Rat, Rabbit, Zebrafish, Dog, Horse, Bovine
<b>Host</b>	Rabbit
<b>Clonality</b>	Polyclonal
<b>Calculated MW</b>	38850

## Additional Information

---

<b>Gene ID</b>	21401
<b>Alias Symbol</b>	S-II, SII-K1
<b>Other Names</b>	Transcription elongation factor A protein 3, Transcription elongation factor S-II protein 3, Transcription elongation factor TFIIS.h, Tcea3, Tfiish
<b>Format</b>	Liquid. Purified antibody supplied in 1x PBS buffer with 0.09% (w/v) sodium azide and 2% sucrose.
<b>Reconstitution &amp; Storage</b>	Add 50 ul of distilled water. Final anti-Tcea3 antibody concentration is 1 mg/ml in PBS buffer with 2% sucrose. For longer periods of storage, store at 20°C. Avoid repeat freeze-thaw cycles.
<b>Precautions</b>	Tcea3 antibody - C-terminal region is for research use only and not for use in diagnostic or therapeutic procedures.

## Protein Information

---

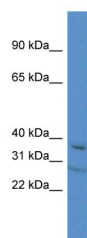
<b>Name</b>	Tcea3
<b>Synonyms</b>	Tfiish
<b>Function</b>	Necessary for efficient RNA polymerase II transcription elongation past template-encoded arresting sites. The arresting sites in DNA have the property of trapping a certain fraction of elongating RNA polymerases that pass through, resulting in locked ternary complexes. Cleavage of the nascent transcript by S-II allows the resumption of elongation from the new 3'-terminus.
<b>Cellular Location</b>	Nucleus.

**Tissue Location**

Liver, kidney and heart.

**Images**

---



WB Suggested Anti-Tcea3 Antibody Titration: 1.0 µg/ml  
Positive Control: Mouse Thymus

Please note: All products are 'FOR RESEARCH USE ONLY. NOT FOR USE IN DIAGNOSTIC OR THERAPEUTIC PROCEDURES'.