

TBX15 antibody - C-terminal region

Rabbit Polyclonal Antibody

Catalog # AI12836

Product Information

Application	WB, IHC
Primary Accession	Q5JT54
Other Accession	NM_152380 , NP_689593
Reactivity	Human, Mouse, Rat, Rabbit, Zebrafish, Pig, Dog, Guinea Pig, Horse, Bovine
Predicted	Human, Mouse, Rat, Zebrafish, Pig, Chicken, Dog, Horse, Bovine
Host	Rabbit
Clonality	Polyclonal
Calculated MW	55 KDa

Additional Information

Alias Symbol	TBX14
Format	Liquid. Purified antibody supplied in 1x PBS buffer with 0.09% (w/v) sodium azide and 2% sucrose.
Reconstitution & Storage	Add 100 ul of distilled water. Final anti-TBX15 antibody concentration is 1 mg/ml in PBS buffer with 2% sucrose. For longer periods of storage, store at 20°C. Avoid repeat freeze-thaw cycles.
Precautions	TBX15 antibody - C-terminal region is for research use only and not for use in diagnostic or therapeutic procedures.

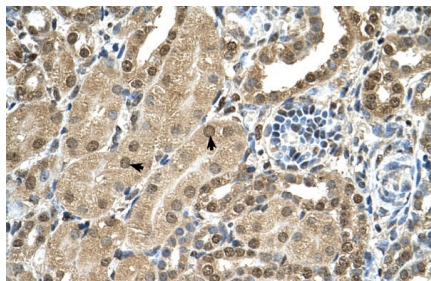
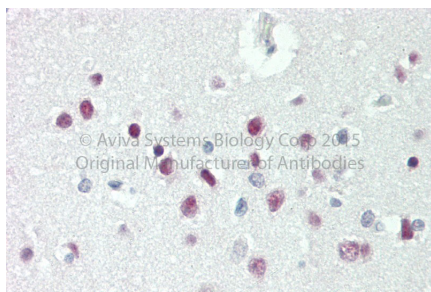
Protein Information

References

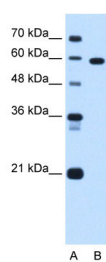
Agulnik, S.I., (1998) Genomics 51(1), 68-75
Reconstitution and Storage: For short term use, store at 2-8°C up to 1 week. For long term storage, store at -20°C in small aliquots to prevent freeze-thaw cycles.

Images

Rabbit Anti-TBX15 antibody Catalog Number: AI12836
Formalin Fixed Paraffin Embedded Tissue: Human Adult
Brain, cortex Observed Staining: Cytoplasm in
hepatocytes Primary Antibody Concentration: 1:600
Secondary Antibody: Donkey anti-Rabbit-Cy3 Secondary
Antibody Concentration: 1:200 Magnification: 20X
Exposure Time: 0.5 - 2.0 sec



Human kidney



WB Suggested Anti-TBX15 Antibody Titration: 1.25µg/ml
Positive Control: Jurkat cell lysate

Please note: All products are 'FOR RESEARCH USE ONLY. NOT FOR USE IN DIAGNOSTIC OR THERAPEUTIC PROCEDURES'.