

AGXT2L2 antibody - C-terminal region

Rabbit Polyclonal Antibody

Catalog # AI12837

Product Information

Application	WB
Primary Accession	Q8IUZ5
Other Accession	NM_153373 , NP_699204
Reactivity	Human, Mouse, Rat, Rabbit, Pig, Dog, Guinea Pig, Horse, Bovine
Predicted	Human, Rat, Rabbit, Dog, Horse, Bovine
Host	Rabbit
Clonality	Polyclonal
Calculated MW	49711

Additional Information

Gene ID	85007
Alias Symbol	MGC117348, MGC15875, MGC45484, AGXT2L2
Other Names	5-phosphohydroxy-L-lysine phospho-lyase, 4.2.3.134, Alanine--glyoxylate aminotransferase 2-like 2, PHYKPL, AGXT2L2
Format	Liquid. Purified antibody supplied in 1x PBS buffer with 0.09% (w/v) sodium azide and 2% sucrose.
Reconstitution & Storage	Add 50 ul of distilled water. Final anti-AGXT2L2 antibody concentration is 1 mg/ml in PBS buffer with 2% sucrose. For longer periods of storage, store at 20°C. Avoid repeat freeze-thaw cycles.
Precautions	AGXT2L2 antibody - C-terminal region is for research use only and not for use in diagnostic or therapeutic procedures.

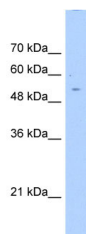
Protein Information

Name	PHYKPL
Synonyms	AGXT2L2 {ECO:0000303 PubMed:22241472}
Function	Catalyzes the pyridoxal-phosphate-dependent breakdown of 5-phosphohydroxy-L-lysine, converting it to ammonia, inorganic phosphate and 2-aminoadipate semialdehyde.
Cellular Location	Mitochondrion.

References

Rual,J.F.,(2005)Nature437(7062),1173-1178ReconstitutionandStorage:Forshorttermuse,storeat2-8Cupto1week.Forlongtermstorage,storeat-20Cinsmallaliquotstopreventfreeze-thawcycles.

Images



WB Suggested Anti-AGXT2L2 Antibody Titration: 0.2-1
µg/ml
Positive Control: HepG2 cell lysate

Please note: All products are 'FOR RESEARCH USE ONLY. NOT FOR USE IN DIAGNOSTIC OR THERAPEUTIC PROCEDURES'.