

# KIAA1549 antibody - C-terminal region

Rabbit Polyclonal Antibody

Catalog # AI12843

## Product Information

---

<b>Application</b>	WB
<b>Primary Accession</b>	<a href="#">Q9HCM3</a>
<b>Other Accession</b>	<a href="#">NM_001164665</a> , <a href="#">AAH38232</a>
<b>Reactivity</b>	Human, Mouse, Rat, Rabbit, Pig, Dog, Guinea Pig, Horse, Bovine
<b>Predicted</b>	Rabbit, Pig, Dog, Guinea Pig, Horse, Bovine
<b>Host</b>	Rabbit
<b>Clonality</b>	Polyclonal
<b>Calculated MW</b>	210755

## Additional Information

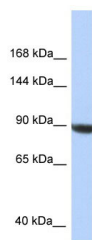
---

<b>Gene ID</b>	57670
<b>Alias Symbol</b>	FLJ11731, FLJ38703, FLJ40644, KIAA1549
<b>Other Names</b>	UPF0606 protein KIAA1549, KIAA1549
<b>Format</b>	Liquid. Purified antibody supplied in 1x PBS buffer with 0.09% (w/v) sodium azide and 2% sucrose.
<b>Reconstitution &amp; Storage</b>	Add 50 ul of distilled water. Final anti-KIAA1549 antibody concentration is 1 mg/ml in PBS buffer with 2% sucrose. For longer periods of storage, store at 20°C. Avoid repeat freeze-thaw cycles.
<b>Precautions</b>	KIAA1549 antibody - C-terminal region is for research use only and not for use in diagnostic or therapeutic procedures.

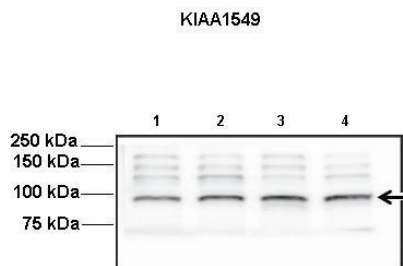
## Protein Information

---

<b>Name</b>	KIAA1549 ( <a href="#">HGNC:22219</a> )
<b>Function</b>	May play a role in photoreceptor function.
<b>Cellular Location</b>	Membrane; Multi-pass membrane protein. Cell projection, cilium {ECO:0000250 UniProtKB:Q68FD9}. Note=In the retinal photoreceptor cells, localizes at the connecting cilium, a thin bridge linking the cell body and the light-sensing outer segment {ECO:0000250 UniProtKB:Q68FD9}
<b>Tissue Location</b>	[Isoform 1]: Expression is low to moderate in retina and tissues, such as heart and kidney, and is predominantly expressed in brain.



WB Suggested Anti-KIAA1549 Antibody Titration: 1.0  $\mu$ g/ml  
Positive Control: HepG2 Whole Cell



Lanes: Lane1-4: 30ug mouse neurosphere lysate  
Primary Antibody Dilution: 1:1000  
Secondary Antibody: Anti-rabbit HRP  
Secondary Antibody Dilution: 1:5000  
Gene Name: KIAA1549  
Submitted by: Yi-Hsien Chen, Washington University  
School of Medicine

See Immunoblot 2 Data and Customer Feedback for more Information

Please note: All products are 'FOR RESEARCH USE ONLY. NOT FOR USE IN DIAGNOSTIC OR THERAPEUTIC PROCEDURES'.