

# BSX Antibody - C-terminal region

Rabbit Polyclonal Antibody

Catalog # AI12844

## Product Information

---

Application	WB
Primary Accession	<a href="#">Q3C1V8</a>
Other Accession	<a href="#">NM_001098169</a> , <a href="#">NP_001091639</a>
Reactivity	Human, Mouse, Rat, Rabbit, Pig, Dog, Guinea Pig, Horse, Bovine
Predicted	Human, Mouse, Rat, Rabbit, Pig, Dog, Guinea Pig, Horse, Bovine
Host	Rabbit
Clonality	Polyclonal
Calculated MW	25933

## Additional Information

---

Gene ID	390259
Alias Symbol	BSX1
Other Names	Brain-specific homeobox protein homolog, BSX, BSX1
Format	Liquid. Purified antibody supplied in 1x PBS buffer with 0.09% (w/v) sodium azide and 2% sucrose.
Reconstitution & Storage	Add 50 &mu; l of distilled water. Final Anti-BSX antibody concentration is 1 mg/ml in PBS buffer with 2% sucrose. For longer periods of storage, store at -20°C. Avoid repeat freeze-thaw cycles.
Precautions	BSX Antibody - C-terminal region is for research use only and not for use in diagnostic or therapeutic procedures.

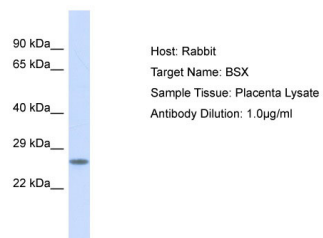
## Protein Information

---

Name	BSX
Synonyms	BSX1
Function	DNA binding protein that function as transcriptional activator. Is essential for normal postnatal growth and nursing. Is an essential factor for neuronal neuropeptide Y and agouti-related peptide function and locomotory behavior in the control of energy balance (By similarity).
Cellular Location	Nucleus {ECO:0000250 UniProtKB:Q810B3}.

## Images

---



Host: Rabbit  
Target Name: BSX  
Sample Tissue: Placenta lysates  
Antibody Dilution: 1.0µg/ml

Please note: All products are 'FOR RESEARCH USE ONLY. NOT FOR USE IN DIAGNOSTIC OR THERAPEUTIC PROCEDURES'.