

NdrG2 antibody - middle region

Rabbit Polyclonal Antibody

Catalog # AI12863

Product Information

Application	WB
Primary Accession	Q9QYG0
Other Accession	NM_013864 , NP_038892
Reactivity	Human, Mouse, Rat, Rabbit, Zebrafish, Pig, Dog, Guinea Pig, Horse, Bovine
Predicted	Human, Mouse, Rat, Rabbit, Zebrafish, Pig, Dog, Guinea Pig, Bovine
Host	Rabbit
Clonality	Polyclonal
Calculated MW	40789

Additional Information

Gene ID	29811
Alias Symbol	AI182517, AU040374, Ndr2, SYLD
Other Names	Protein NDRG2, N-myc downstream-regulated gene 2 protein, Protein Ndr2, NdrG2, Kiaa1248, Ndr2
Format	Liquid. Purified antibody supplied in 1x PBS buffer with 0.09% (w/v) sodium azide and 2% sucrose.
Reconstitution & Storage	Add 50 ul of distilled water. Final anti-NdrG2 antibody concentration is 1 mg/ml in PBS buffer with 2% sucrose. For longer periods of storage, store at 20°C. Avoid repeat freeze-thaw cycles.
Precautions	NdrG2 antibody - middle region is for research use only and not for use in diagnostic or therapeutic procedures.

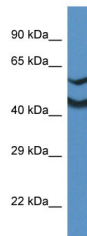
Protein Information

Name	NdrG2
Synonyms	Kiaa1248, Ndr2
Function	Contributes to the regulation of the Wnt signaling pathway. Down-regulates CTNNB1-mediated transcriptional activation of target genes, such as CCND1, and may thereby act as tumor suppressor. May be involved in dendritic cell and neuron differentiation (By similarity).
Cellular Location	Cytoplasm. Cytoplasm, perinuclear region. Cell projection, growth cone. Note=In neurons, seems to concentrate at axonal growth cone. Perinuclear in neurons (By similarity).

Tissue Location

Expressed at highest levels in brain, heart and liver, and at lower levels in kidney, colon, skeletal muscle, adrenal gland, ovary and uterus (at protein level)

Images



WB Suggested Anti-Ndrg2 Antibody Titration: 1.0 µg/ml
Positive Control: Mouse Kidney

Please note: All products are 'FOR RESEARCH USE ONLY. NOT FOR USE IN DIAGNOSTIC OR THERAPEUTIC PROCEDURES'.