

Sdhb antibody - middle region

Rabbit Polyclonal Antibody

Catalog # AI12864

Product Information

Application	WB
Primary Accession	Q9CQA3
Other Accession	NM_023374 , NP_075863
Reactivity	Human, Mouse, Rat, Rabbit, Zebrafish, Pig, Dog, Guinea Pig, Horse, Bovine
Predicted	Human, Mouse, Rabbit, Guinea Pig, Horse, Bovine
Host	Rabbit
Clonality	Polyclonal
Calculated MW	31814

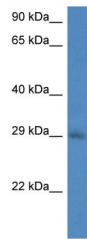
Additional Information

Gene ID	67680
Alias Symbol	0710008N11Rik
Other Names	Succinate dehydrogenase [ubiquinone] iron-sulfur subunit, mitochondrial, 1.3.5.1, Iron-sulfur subunit of complex II, Ip, Sdhb
Format	Liquid. Purified antibody supplied in 1x PBS buffer with 0.09% (w/v) sodium azide and 2% sucrose.
Reconstitution & Storage	Add 50 ul of distilled water. Final anti-Sdhb antibody concentration is 1 mg/ml in PBS buffer with 2% sucrose. For longer periods of storage, store at 20°C. Avoid repeat freeze-thaw cycles.
Precautions	Sdhb antibody - middle region is for research use only and not for use in diagnostic or therapeutic procedures.

Protein Information

Name	Sdhb
Function	Iron-sulfur protein (IP) subunit of the succinate dehydrogenase complex (mitochondrial respiratory chain complex II), responsible for transferring electrons from succinate to ubiquinone (coenzyme Q) (By similarity). SDH also oxidizes malate to the non- canonical enol form of oxaloacetate, enol-oxaloacetate. Enol- oxaloacetate, which is a potent inhibitor of the succinate dehydrogenase activity, is further isomerized into keto-oxaloacetate (By similarity).
Cellular Location	Mitochondrion inner membrane {ECO:0000250 UniProtKB:Q9YHT2}; Peripheral membrane protein {ECO:0000250 UniProtKB:Q9YHT2}; Matrix side

Images



WB Suggested Anti-Sdhb Antibody Titration: 1.0 µg/ml
Positive Control: Mouse Heart

Please note: All products are 'FOR RESEARCH USE ONLY. NOT FOR USE IN DIAGNOSTIC OR THERAPEUTIC PROCEDURES'.