

C13orf28 antibody - middle region

Rabbit Polyclonal Antibody

Catalog # AI12866

Product Information

| | |
|--------------------------|---|
| Application | WB |
| Primary Accession | Q96KW9 |
| Other Accession | NM_145248 , NP_660291 |
| Reactivity | Human |
| Predicted | Human |
| Host | Rabbit |
| Clonality | Polyclonal |
| Calculated MW | 21466 |

Additional Information

| | |
|-------------------------------------|---|
| Gene ID | 122258 |
| Alias Symbol | FLJ27356, C13orf28 |
| Other Names | Protein SPACA7, Sperm acrosome-associated protein 7, SPACA7, C13orf28 |
| Format | Liquid. Purified antibody supplied in 1x PBS buffer with 0.09% (w/v) sodium azide and 2% sucrose. |
| Reconstitution & Storage | Add 50 ul of distilled water. Final anti-C13orf28 antibody concentration is 1 mg/ml in PBS buffer with 2% sucrose. For longer periods of storage, store at 20°C. Avoid repeat freeze-thaw cycles. |
| Precautions | C13orf28 antibody - middle region is for research use only and not for use in diagnostic or therapeutic procedures. |

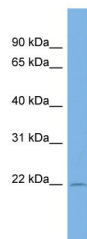
Protein Information

| | |
|--------------------------|---|
| Name | SPACA7 (HGNC:29575) |
| Synonyms | C13orf28 |
| Function | Involved in fertilization. Seems not to play a direct role in sperm-egg binding or gamete fusion. |
| Cellular Location | Secreted {ECO:0000250 UniProtKB:Q9D2S4}. Cytoplasmic vesicle, secretory vesicle, acrosome. Cytoplasmic vesicle, secretory vesicle, acrosome lumen {ECO:0000250 UniProtKB:Q9D2S4}. Note=Localized in perinuclear pro-acrosomal granules in round spermatides. Localized between the inner and outer acrosomal membranes (matrix or lumen) in spermatozoa. Secreted during acrosome exocytosis {ECO:0000250 UniProtKB:Q9D2S4} |

Tissue Location

Expressed in spermatozoa (at protein level) (PubMed:22495889).

Images



WB Suggested Anti-C13orf28 Antibody Titration: 0.2-1
µg/ml
ELISA Titer: 1:62500
Positive Control: COLO205 cell lysate

Please note: All products are 'FOR RESEARCH USE ONLY. NOT FOR USE IN DIAGNOSTIC OR THERAPEUTIC PROCEDURES'.