

# IL28RA antibody - N-terminal region

Rabbit Polyclonal Antibody

Catalog # AI12874

## Product Information

---

<b>Application</b>	WB
<b>Primary Accession</b>	<a href="#">Q8IU57</a>
<b>Other Accession</b>	<a href="#">NM_170743</a> , <a href="#">NP_734464</a>
<b>Reactivity</b>	Human, Rat, Rabbit, Pig, Horse, Bovine
<b>Predicted</b>	Human, Rabbit, Dog, Horse, Bovine
<b>Host</b>	Rabbit
<b>Clonality</b>	Polyclonal
<b>Calculated MW</b>	57653

## Additional Information

---

<b>Gene ID</b>	163702
<b>Alias Symbol</b> <b>Other Names</b>	CRF2/12, IFNLR, IFNLR1, LICR2, il-28r1, IL-28R1, IL28RA Interferon lambda receptor 1, IFN-lambda receptor 1, IFN-lambda-R1, Cytokine receptor class-II member 12, Cytokine receptor family 2 member 12, CRF2-12, Interleukin-28 receptor subunit alpha, IL-28 receptor subunit alpha, IL-28R-alpha, IL-28RA, Likely interleukin or cytokine receptor 2, LICR2, IFNLR1, IL28RA, LICR2
<b>Format</b>	Liquid. Purified antibody supplied in 1x PBS buffer with 0.09% (w/v) sodium azide and 2% sucrose.
<b>Reconstitution &amp; Storage</b>	Add 50 ul of distilled water. Final anti-IL28RA antibody concentration is 1 mg/ml in PBS buffer with 2% sucrose. For longer periods of storage, store at 20°C. Avoid repeat freeze-thaw cycles.
<b>Precautions</b>	IL28RA antibody - N-terminal region is for research use only and not for use in diagnostic or therapeutic procedures.

## Protein Information

---

<b>Name</b>	IFNLR1
<b>Synonyms</b>	IL28RA, LICR2
<b>Function</b>	The IFNLR1/IL10RB dimer is a receptor for the cytokine ligands IFNL2 and IFNL3 and mediates their antiviral activity. The ligand/receptor complex stimulate the activation of the JAK/STAT signaling pathway leading to the expression of IFN-stimulated genes (ISG), which contribute to the antiviral state. Determines the cell type specificity of the lambda interferon action.

Shows a more restricted pattern of expression in the epithelial tissues thereby limiting responses to lambda interferons primarily to epithelial cells of the respiratory, gastrointestinal, and reproductive tracts. Seems not to be essential for early virus-activated host defense in vaginal infection, but plays an important role in Toll-like receptor (TLR)- induced antiviral defense. Plays a significant role in the antiviral immune defense in the intestinal epithelium.

**Cellular Location**

Membrane; Single-pass type I membrane protein

**Tissue Location**

Widely expressed.

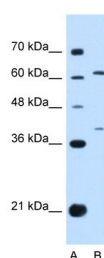
## References

---

Dumoutier, L., (2004) J. Biol. Chem. 279(31), 32269-32274. Reconstitution and Storage: For short term use, store at 2-8°C up to 1 week. For long term storage, store at -20°C in small aliquots to prevent freeze-thaw cycles.

## Images

---



WB Suggested Anti-IL28RA Antibody Titration: 0.2-1 µg/ml  
Positive Control: HepG2 cell lysate

Please note: All products are 'FOR RESEARCH USE ONLY. NOT FOR USE IN DIAGNOSTIC OR THERAPEUTIC PROCEDURES'.