

PAX8 antibody - N-terminal region

Rabbit Polyclonal Antibody

Catalog # AI12877

Product Information

Application	WB
Primary Accession	Q06710
Other Accession	NM_003466 , NP_003457
Reactivity	Human, Mouse, Rat, Rabbit, Zebrafish, Dog, Guinea Pig, Horse, Bovine
Predicted	Human, Mouse, Rat, Rabbit, Zebrafish, Dog, Guinea Pig
Host	Rabbit
Clonality	Polyclonal
Calculated MW	48218

Additional Information

Gene ID	7849
Other Names	Paired box protein Pax-8, PAX8
Format	Liquid. Purified antibody supplied in 1x PBS buffer with 0.09% (w/v) sodium azide and 2% sucrose.
Reconstitution & Storage	Add 50 ul of distilled water. Final anti-PAX8 antibody concentration is 1 mg/ml in PBS buffer with 2% sucrose. For longer periods of storage, store at 20°C. Avoid repeat freeze-thaw cycles.
Precautions	PAX8 antibody - N-terminal region is for research use only and not for use in diagnostic or therapeutic procedures.

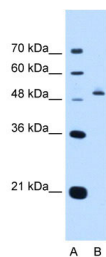
Protein Information

Name	PAX8
Function	Transcription factor for the thyroid-specific expression of the genes exclusively expressed in the thyroid cell type, maintaining the functional differentiation of such cells.
Cellular Location	Nucleus.
Tissue Location	Expressed in the excretory system, thyroid gland and Wilms tumors

References

Kimura, K., (2006) Genome Res. 16(1), 55-65 Reconstitution and Storage: For short term use, store at 2-8°C up to 1 week. For long term storage, store at -20°C in small aliquots to prevent freeze-thaw cycles.

Images



WB Suggested Anti-PAX8 Antibody Titration: 0.2-1 µg/ml
Positive Control: HepG2 cell lysate

Please note: All products are 'FOR RESEARCH USE ONLY. NOT FOR USE IN DIAGNOSTIC OR THERAPEUTIC PROCEDURES'.