

RPL3 antibody - C-terminal region

Rabbit Polyclonal Antibody

Catalog # AI12882

Product Information

Application	WB
Primary Accession	B3KS36
Other Accession	NM_001033853 , NP_001029025
Reactivity	Human, Mouse, Rat, Rabbit, Zebrafish, Pig, Dog, Guinea Pig, Horse, Bovine
Predicted	Human, Mouse, Rabbit, Zebrafish, Chicken, Dog, Guinea Pig, Horse
Host	Rabbit
Clonality	Polyclonal
Calculated MW	40 KDa

Additional Information

Alias Symbol	MGC104284, TARBP-B, L3
Format	Liquid. Purified antibody supplied in 1x PBS buffer with 0.09% (w/v) sodium azide and 2% sucrose.
Reconstitution & Storage	Add 50 ul of distilled water. Final anti-RPL3 antibody concentration is 1 mg/ml in PBS buffer with 2% sucrose. For longer periods of storage, store at 20°C. Avoid repeat freeze-thaw cycles.
Precautions	RPL3 antibody - C-terminal region is for research use only and not for use in diagnostic or therapeutic procedures.

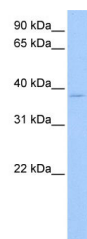
Protein Information

References

Tu, L.C., (2007) Mol. Cell Proteomics 6(4), 575-588 Reconstitution and Storage: For short term use, store at 2-8°C up to 1 week. For long term storage, store at -20°C in small aliquots to prevent freeze-thaw cycles.

Images

WB Suggested Anti-RPL3 Antibody Titration: 0.2-1 µg/ml
Positive Control: 721_B cell lysate
RPL3 is strongly supported by BioGPS gene expression data to be expressed in Human 721_B cells



Please note: All products are 'FOR RESEARCH USE ONLY. NOT FOR USE IN DIAGNOSTIC OR THERAPEUTIC PROCEDURES'.