

# Csnk2b Antibody - N-terminal region

Rabbit Polyclonal Antibody

Catalog # AI12883

## Product Information

---

<b>Application</b>	WB
<b>Primary Accession</b>	<a href="#">P67871</a>
<b>Other Accession</b>	<a href="#">NM_009975</a> , <a href="#">NP_034105</a>
<b>Reactivity</b>	Human, Mouse, Rat, Rabbit, Zebrafish, Pig, Goat, Dog, Guinea Pig, Horse, Bovine, Sheep
<b>Predicted</b>	Human, Mouse, Rat, Rabbit, Zebrafish, Pig, Goat, Dog, Guinea Pig, Horse, Bovine, Sheep
<b>Host</b>	Rabbit
<b>Clonality</b>	Polyclonal
<b>Calculated MW</b>	24942

## Additional Information

---

<b>Gene ID</b>	13001
<b>Other Names</b>	Casein kinase II subunit beta, CK II beta, Phosvitin, Csnk2b, Ck2n
<b>Format</b>	Liquid. Purified antibody supplied in 1x PBS buffer with 0.09% (w/v) sodium azide and 2% sucrose.
<b>Reconstitution &amp; Storage</b>	Add 50 ul of distilled water. Final anti-Csnk2b antibody concentration is 1 mg/ml in PBS buffer with 2% sucrose. For longer periods of storage, store at 20°C. Avoid repeat freeze-thaw cycles.
<b>Precautions</b>	Csnk2b Antibody - N-terminal region is for research use only and not for use in diagnostic or therapeutic procedures.

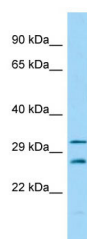
## Protein Information

---

<b>Name</b>	Csnk2b
<b>Synonyms</b>	Ck2n
<b>Function</b>	Regulatory subunit of casein kinase II/CK2. As part of the kinase complex regulates the basal catalytic activity of the alpha subunit a constitutively active serine/threonine-protein kinase that phosphorylates a large number of substrates containing acidic residues C-terminal to the phosphorylated serine or threonine (PubMed: <a href="#">16818610</a> ). Participates in Wnt signaling (PubMed: <a href="#">10806215</a> ).
<b>Cellular Location</b>	Nucleus {ECO:0000250 UniProtKB:P67870}.

## Images

---



Host: Rabbit  
Target Name: Csnk2b  
Sample Tissue: Mouse Testis lysates  
Antibody Dilution: 1.0µg/ml

Please note: All products are 'FOR RESEARCH USE ONLY. NOT FOR USE IN DIAGNOSTIC OR THERAPEUTIC PROCEDURES'.