

IGFBP7 antibody - C-terminal region

Rabbit Polyclonal Antibody

Catalog # AI12886

Product Information

Application	WB, IHC
Primary Accession	Q16270
Other Accession	NM_001553 , NP_001544
Reactivity	Human, Mouse, Rat, Rabbit, Dog, Guinea Pig, Horse, Bovine, Sheep
Predicted	Human, Mouse, Rat, Rabbit, Pig, Dog, Guinea Pig, Bovine, Sheep
Host	Rabbit
Clonality	Polyclonal
Calculated MW	29130

Additional Information

Gene ID	3490
Alias Symbol Other Names	FSTL2, IGFBP-7, IGFBP-7v, MAC25, PSF, AGM, TAF, IBP-7, RAMSVPS, IGFBPRP1 Insulin-like growth factor-binding protein 7, IBP-7, IGF-binding protein 7, IGFBP-7, IGFBP-rP1, MAC25 protein, PGI2-stimulating factor, Prostacyclin-stimulating factor, Tumor-derived adhesion factor, TAF, IGFBP7, MAC25, PSF
Format	Liquid. Purified antibody supplied in 1x PBS buffer with 0.09% (w/v) sodium azide and 2% sucrose.
Reconstitution & Storage	Add 50 ul of distilled water. Final anti-IGFBP7 antibody concentration is 1 mg/ml in PBS buffer with 2% sucrose. For longer periods of storage, store at 20°C. Avoid repeat freeze-thaw cycles.
Precautions	IGFBP7 antibody - C-terminal region is for research use only and not for use in diagnostic or therapeutic procedures.

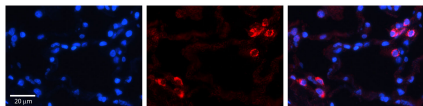
Protein Information

Name	IGFBP7
Synonyms	MAC25, PSF
Function	Binds IGF1 and IGF2 with a relatively low affinity. Stimulates prostacyclin (PGI2) production. Stimulates cell adhesion. Acts as a ligand for CD93 to play a role in angiogenesis (PubMed: 38218180).
Cellular Location	Secreted.

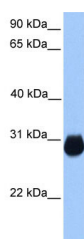
References

Wajapeyee, N., (2008) Cell 132(3), 363-374 Reconstitution and Storage: For short term use, store at 2-8°C up to 1 week. For long term storage, store at -20°C in small aliquots to prevent freeze-thaw cycles.

Images



IGFBP7 antibody - C-terminal region
Formalin Fixed Paraffin Embedded Tissue: Human Lung
Tissue Observed Staining: Cytoplasm and membrane of pneumocytes
Primary Antibody
Concentration: 1:100
Secondary Antibody: Donkey anti-Rabbit-Cy3
Secondary Antibody
Concentration: 1:200
Magnification: 20X
Exposure Time: 0.5 - 2.0 sec



WB Suggested Anti-IGFBP7 Antibody Titration: 0.2-1 $\mu\text{g/ml}$
Positive Control: Human Muscle

Please note: All products are 'FOR RESEARCH USE ONLY. NOT FOR USE IN DIAGNOSTIC OR THERAPEUTIC PROCEDURES'.