

PSMD8 antibody - C-terminal region

Rabbit Polyclonal Antibody

Catalog # AI12891

Product Information

Application	WB
Primary Accession	P48556
Other Accession	P48556 , AAV38494
Reactivity	Human, Mouse, Rat, Rabbit, Pig, Dog, Guinea Pig, Horse, Bovine
Predicted	Human, Mouse, Rat, Dog, Guinea Pig, Horse, Bovine
Host	Rabbit
Clonality	Polyclonal
Calculated MW	39612

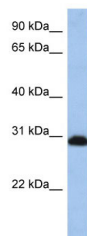
Additional Information

Gene ID	5714
Alias Symbol Other Names	HIP6, HYPF, MGC1660, Nin1p, Rpn12, S14, p31 26S proteasome non-ATPase regulatory subunit 8, 26S proteasome regulatory subunit RPN12, 26S proteasome regulatory subunit S14, p31, PSMD8
Format	Liquid. Purified antibody supplied in 1x PBS buffer with 0.09% (w/v) sodium azide and 2% sucrose.
Reconstitution & Storage	Add 50 ul of distilled water. Final anti-PSMD8 antibody concentration is 1 mg/ml in PBS buffer with 2% sucrose. For longer periods of storage, store at 20°C. Avoid repeat freeze-thaw cycles.
Precautions	PSMD8 antibody - C-terminal region is for research use only and not for use in diagnostic or therapeutic procedures.

Protein Information

Name	PSMD8
Function	Component of the 26S proteasome, a multiprotein complex involved in the ATP-dependent degradation of ubiquitinated proteins. This complex plays a key role in the maintenance of protein homeostasis by removing misfolded or damaged proteins, which could impair cellular functions, and by removing proteins whose functions are no longer required. Therefore, the proteasome participates in numerous cellular processes, including cell cycle progression, apoptosis, or DNA damage repair.

Images



WB Suggested Anti-PSMD8 Antibody Titration: 0.2-1 µg/ml
Positive Control: HepG2 cell lysate

Please note: All products are 'FOR RESEARCH USE ONLY. NOT FOR USE IN DIAGNOSTIC OR THERAPEUTIC PROCEDURES'.