

TCAP antibody - middle region

Rabbit Polyclonal Antibody

Catalog # AI12893

Product Information

Application	WB
Primary Accession	O15273
Other Accession	NM_003673 , NP_003664
Reactivity	Human, Mouse, Rat, Rabbit, Pig, Goat, Dog, Guinea Pig, Horse, Bovine
Predicted	Human, Mouse, Rabbit, Pig, Dog
Host	Rabbit
Clonality	Polyclonal
Calculated MW	19052

Additional Information

Gene ID	8557
Alias Symbol Other Names	CMD1N, LGMD2G, T-cap, TELE, telethonin Telethonin, Titin cap protein, TCAP
Format	Liquid. Purified antibody supplied in 1x PBS buffer with 0.09% (w/v) sodium azide and 2% sucrose.
Reconstitution & Storage	Add 100 ul of distilled water. Final anti-TCAP antibody concentration is 1 mg/ml in PBS buffer with 2% sucrose. For longer periods of storage, store at 20°C. Avoid repeat freeze-thaw cycles.
Precautions	TCAP antibody - middle region is for research use only and not for use in diagnostic or therapeutic procedures.

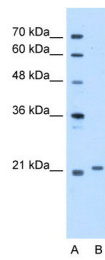
Protein Information

Name	TCAP
Function	Muscle assembly regulating factor. Mediates the antiparallel assembly of titin (TTN) molecules at the sarcomeric Z-disk.
Cellular Location	Cytoplasm, myofibril, sarcomere
Tissue Location	Heart and skeletal muscle.

References

Bos, J.M., (2008) Am. Heart J. 155(6), 1128-1134 Reconstitution and Storage: For short term use, store at 2-8°C up to 1 week. For long term storage, store at -20°C in small aliquots to prevent freeze-thaw cycles.

Images



WB Suggested Anti-TCAP Antibody Titration: 5.0 µg/ml
Positive Control: HepG2 cell lysate

Please note: All products are 'FOR RESEARCH USE ONLY. NOT FOR USE IN DIAGNOSTIC OR THERAPEUTIC PROCEDURES'.