

Mdh1 Antibody - N-terminal region

Rabbit Polyclonal Antibody

Catalog # AI12897

Product Information

Application	WB
Primary Accession	P14152
Other Accession	NM_008618 , NP_032644
Reactivity	Human, Mouse, Rat, Rabbit, Zebrafish, Pig, Dog, Guinea Pig, Horse, Bovine
Predicted	Human, Mouse, Rat, Rabbit, Zebrafish, Pig, Dog, Guinea Pig, Horse, Bovine
Host	Rabbit
Clonality	Polyclonal
Calculated MW	36511

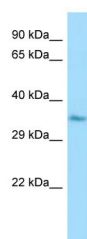
Additional Information

Gene ID	17449
Alias Symbol	B230377B03Rik, D17921, MDH-s, MDHA, Mor-2, Mor2
Other Names	Malate dehydrogenase, cytoplasmic, 1.1.1.37, Cytosolic malate dehydrogenase, Mdh1, Mor2
Format	Liquid. Purified antibody supplied in 1x PBS buffer with 0.09% (w/v) sodium azide and 2% sucrose.
Reconstitution & Storage	Add 50 ul of distilled water. Final anti-Mdh1 antibody concentration is 1 mg/ml in PBS buffer with 2% sucrose. For longer periods of storage, store at 20°C. Avoid repeat freeze-thaw cycles.
Precautions	Mdh1 Antibody - N-terminal region is for research use only and not for use in diagnostic or therapeutic procedures.

Protein Information

Name	Mdh1
Synonyms	Mor2
Function	Catalyzes the reduction of aromatic alpha-keto acids in the presence of NADH. Plays essential roles in the malate-aspartate shuttle and the tricarboxylic acid cycle, important in mitochondrial NADH supply for oxidative phosphorylation. Catalyzes the reduction of 2- oxoglutarate to 2-hydroxyglutarate, leading to elevated reactive oxygen species (ROS).
Cellular Location	Cytoplasm, cytosol {ECO:0000250 UniProtKB:P40925}

Images



Host: Rabbit
Target Name: Mdh1
Sample Tissue: Mouse Stomach lysates
Antibody Dilution: 1.0µg/ml

Please note: All products are 'FOR RESEARCH USE ONLY. NOT FOR USE IN DIAGNOSTIC OR THERAPEUTIC PROCEDURES'.