

PPA1 antibody - N-terminal region

Rabbit Polyclonal Antibody

Catalog # AI12903

Product Information

Application	WB
Primary Accession	Q15181
Other Accession	NM_021129 , NP_066952
Reactivity	Human, Mouse, Rat, Rabbit, Zebrafish, Pig, Goat, Dog, Guinea Pig, Horse, Bovine, Yeast
Predicted Host	Human, Mouse, Rat, Rabbit, Zebrafish, Pig, Chicken, Goat, Dog, Horse
Clonality	Rabbit
Calculated MW	Polyclonal 32660

Additional Information

Gene ID	5464
Alias Symbol	IOPPP, MGC111556, PP, PP1, SID6-8061
Other Names	Inorganic pyrophosphatase, 3.6.1.1, Pyrophosphate phospho-hydrolase, PPase, PPA1, IOPPP, PP
Format	Liquid. Purified antibody supplied in 1x PBS buffer with 0.09% (w/v) sodium azide and 2% sucrose.
Reconstitution & Storage	Add 100 ul of distilled water. Final anti-PPA1 antibody concentration is 1 mg/ml in PBS buffer with 2% sucrose. For longer periods of storage, store at 20°C. Avoid repeat freeze-thaw cycles.
Precautions	PPA1 antibody - N-terminal region is for research use only and not for use in diagnostic or therapeutic procedures.

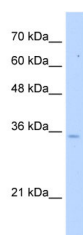
Protein Information

Name	PPA1
Synonyms	IOPPP, PP
Cellular Location	Cytoplasm.
Tissue Location	Expressed ubiquitously.

References

Maksimov,V.V.,(2006)Genetika42(2),274-277ReconstitutionandStorage:Forshorttermuse,storeat2-8Cupto1week.Forlongtermstorage,storeat-20Cinsmallaliquotstopreventfreeze-thawcycles.

Images



WB Suggested Anti-PPA1 Antibody Titration: 5.0 µg/ml
Positive Control: HepG2 Whole Cell

Please note: All products are 'FOR RESEARCH USE ONLY. NOT FOR USE IN DIAGNOSTIC OR THERAPEUTIC PROCEDURES'.