

# Ankrd13c Antibody - C-terminal region

Rabbit Polyclonal Antibody

Catalog # AI12905

## Product Information

---

<b>Application</b>	WB
<b>Primary Accession</b>	<a href="#">Q3UX43</a>
<b>Other Accession</b>	<a href="#">NM_001013806</a> , <a href="#">NP_001013828</a>
<b>Reactivity</b>	Human, Mouse, Rat, Rabbit, Zebrafish, Pig, Dog, Guinea Pig, Horse, Bovine
<b>Predicted</b>	Human, Mouse, Rat, Rabbit, Zebrafish, Pig, Dog, Guinea Pig, Horse, Bovine
<b>Host</b>	Rabbit
<b>Clonality</b>	Polyclonal
<b>Calculated MW</b>	60150

## Additional Information

---

<b>Gene ID</b>	433667
<b>Alias Symbol</b>	AI505652, AU022220
<b>Other Names</b>	Ankyrin repeat domain-containing protein 13C, Ankrd13c
<b>Format</b>	Liquid. Purified antibody supplied in 1x PBS buffer with 0.09% (w/v) sodium azide and 2% sucrose.
<b>Reconstitution &amp; Storage</b>	Add 50 ul of distilled water. Final anti-Ankrd13c antibody concentration is 1 mg/ml in PBS buffer with 2% sucrose. For longer periods of storage, store at 20°C. Avoid repeat freeze-thaw cycles.
<b>Precautions</b>	Ankrd13c Antibody - C-terminal region is for research use only and not for use in diagnostic or therapeutic procedures.

## Protein Information

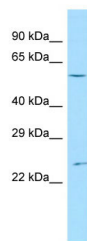
---

<b>Name</b>	Ankrd13c
<b>Function</b>	Acts as a molecular chaperone for G protein-coupled receptors, regulating their biogenesis and exit from the ER.
<b>Cellular Location</b>	Endoplasmic reticulum membrane. Note=Associated with the cytosolic side.

## Images

---

Host: Rabbit



Target Name: Ankrd13c  
Sample Tissue: Mouse Testis lysates  
Antibody Dilution: 1.0µg/ml

Please note: All products are 'FOR RESEARCH USE ONLY. NOT FOR USE IN DIAGNOSTIC OR THERAPEUTIC PROCEDURES'.