

Tat antibody - C-terminal region

Rabbit Polyclonal Antibody

Catalog # AI12909

Product Information

Application	WB
Primary Accession	P04694
Other Accession	NM_012668 , NP_036800
Reactivity	Human, Mouse, Rat, Zebrafish, Pig, Dog, Guinea Pig, Horse, Bovine
Predicted	Human, Mouse, Rat, Rabbit, Zebrafish, Pig, Chicken, Horse, Bovine
Host	Rabbit
Clonality	Polyclonal
Calculated MW	50635

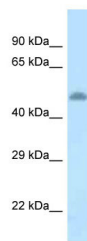
Additional Information

Gene ID	24813
Other Names	Tyrosine aminotransferase, TAT, 2.6.1.5, L-tyrosine:2-oxoglutarate aminotransferase, Tat
Format	Liquid. Purified antibody supplied in 1x PBS buffer with 0.09% (w/v) sodium azide and 2% sucrose.
Reconstitution & Storage	Add 50 ul of distilled water. Final anti-Tat antibody concentration is 1 mg/ml in PBS buffer with 2% sucrose. For longer periods of storage, store at 20°C. Avoid repeat freeze-thaw cycles.
Precautions	Tat antibody - C-terminal region is for research use only and not for use in diagnostic or therapeutic procedures.

Protein Information

Name	Tat
Function	Transaminase involved in tyrosine breakdown. Converts tyrosine to p-hydroxyphenylpyruvate. Can catalyze the reverse reaction, using glutamic acid, with 2-oxoglutarate as cosubstrate (in vitro). Has much lower affinity and transaminase activity towards phenylalanine.
Tissue Location	Liver.

Images



WB Suggested Anti-Tat Antibody Titration: 1.0 µg/ml
Positive Control: Rat Brain

Please note: All products are 'FOR RESEARCH USE ONLY. NOT FOR USE IN DIAGNOSTIC OR THERAPEUTIC PROCEDURES'.