

# Ard1b antibody - middle region

Rabbit Polyclonal Antibody

Catalog # AI12921

## Product Information

<b>Application</b>	WB
<b>Primary Accession</b>	<a href="#">Q4V8K3</a>
<b>Other Accession</b>	<a href="#">NM_001024742</a> , <a href="#">NP_001019913</a>
<b>Reactivity</b>	Human, Mouse, Rat, Rabbit, Zebrafish, Pig, Dog, Guinea Pig, Horse, Bovine, Yeast
<b>Predicted</b>	Human, Mouse, Rat, Rabbit, Zebrafish, Pig, Dog, Guinea Pig, Horse, Bovine, Yeast
<b>Host</b>	Rabbit
<b>Clonality</b>	Polyclonal
<b>Calculated MW</b>	27623

## Additional Information

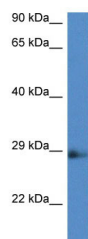
<b>Gene ID</b>	289482
<b>Alias Symbol</b>	Naa11, Ard1b
<b>Other Names</b>	N-alpha-acetyltransferase 11, 2.3.1.88, N-terminal acetyltransferase complex ARD1 subunit homolog B, NatA catalytic subunit Naa11, Naa11, Ard1b, Ard2
<b>Format</b>	Liquid. Purified antibody supplied in 1x PBS buffer with 0.09% (w/v) sodium azide and 2% sucrose.
<b>Reconstitution &amp; Storage</b>	Add 50 ul of distilled water. Final anti-Ard1b antibody concentration is 1 mg/ml in PBS buffer with 2% sucrose. For longer periods of storage, store at 20°C. Avoid repeat freeze-thaw cycles.
<b>Precautions</b>	Ard1b antibody - middle region is for research use only and not for use in diagnostic or therapeutic procedures.

## Protein Information

<b>Name</b>	Naa11
<b>Synonyms</b>	Ard1b, Ard2
<b>Function</b>	Displays alpha (N-terminal) acetyltransferase activity. Proposed alternative catalytic subunit of the N-terminal acetyltransferase A (NatA) complex.
<b>Cellular Location</b>	Cytoplasm {ECO:0000250 UniProtKB:Q9BSU3}. Nucleus {ECO:0000250 UniProtKB:Q9BSU3}

## Images

---



WB Suggested Anti-Ard1b Antibody Titration: 1.0 µg/ml  
Positive Control: Rat Lung

Please note: All products are 'FOR RESEARCH USE ONLY. NOT FOR USE IN DIAGNOSTIC OR THERAPEUTIC PROCEDURES'.