

PCMT1 antibody - middle region

Rabbit Polyclonal Antibody

Catalog # AI12929

Product Information

| | |
|--------------------------|--|
| Application | WB |
| Primary Accession | P22061 |
| Other Accession | NM_005389 , NP_005380 |
| Reactivity | Human, Mouse, Rat, Rabbit, Zebrafish, Goat, Dog, Guinea Pig, Horse, Bovine |
| Predicted | Human, Mouse, Rat, Rabbit, Chicken, Dog, Guinea Pig |
| Host | Rabbit |
| Clonality | Polyclonal |
| Calculated MW | 24636 |

Additional Information

| | |
|-------------------------------------|--|
| Gene ID | 5110 |
| Alias Symbol | PIMT |
| Other Names | Protein-L-isoaspartate(D-aspartate) O-methyltransferase, PIMT, 2.1.1.77, L-isoaspartyl protein carboxyl methyltransferase, Protein L-isoaspartyl/D-aspartyl methyltransferase, Protein-beta-aspartate methyltransferase, PCMT1 |
| Format | Liquid. Purified antibody supplied in 1x PBS buffer with 0.09% (w/v) sodium azide and 2% sucrose. |
| Reconstitution & Storage | Add 100 ul of distilled water. Final anti-PCMT1 antibody concentration is 1 mg/ml in PBS buffer with 2% sucrose. For longer periods of storage, store at 20°C. Avoid repeat freeze-thaw cycles. |
| Precautions | PCMT1 antibody - middle region is for research use only and not for use in diagnostic or therapeutic procedures. |

Protein Information

| | |
|-----------------|--|
| Name | PCMT1 |
| Function | Initiates the repair of damaged proteins by catalyzing methyl esterification of L-isoaspartyl and D-aspartyl residues produced by spontaneous isomerization and racemization of L-aspartyl and L-asparaginyl residues in aging peptides and proteins (PubMed: 3167043 , PubMed: 6469980). Acts on EIF4EBP2, microtubule-associated protein 2, calreticulin, clathrin light chains a and b, Ubiquitin C-terminal hydrolase isozyme L1, phosphatidylethanolamine-binding protein 1, stathmin, beta-synuclein and alpha-synuclein (By similarity). |

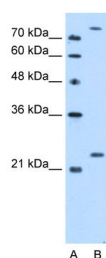
Cellular Location

Cytoplasm, cytosol.

References

Kosugi, S., (2008) Biochem. Biophys. Res. Commun. 371(1), 22-27. Reconstitution and Storage: For short term use, store at 2-8°C up to 1 week. For long term storage, store at -20°C in small aliquots to prevent freeze-thaw cycles.

Images



WB Suggested Anti-PCMT1 Antibody Titration: 2.5 µg/ml
Positive Control: HepG2 cell lysate
PCMT1 is strongly supported by BioGPS gene expression data to be expressed in Human HepG2 cells

Please note: All products are 'FOR RESEARCH USE ONLY. NOT FOR USE IN DIAGNOSTIC OR THERAPEUTIC PROCEDURES'.