

# PECI antibody - middle region

Rabbit Polyclonal Antibody

Catalog # AI12932

## Product Information

Application	WB
Primary Accession	<a href="#">Q7L124</a>
Other Accession	<a href="#">NM_006117</a> , <a href="#">NP_006108</a>
Reactivity	Human, Mouse, Rat, Rabbit, Zebrafish, Pig, Dog, Guinea Pig, Horse, Bovine
Predicted	Human, Mouse, Rat, Zebrafish, Pig, Chicken
Host	Rabbit
Clonality	Polyclonal
Calculated MW	40 KDa

## Additional Information

Alias Symbol	ACBD2, DRS1, HCA88, dJ1013A10.3, PECI, DRS-1
Format	Liquid. Purified antibody supplied in 1x PBS buffer with 0.09% (w/v) sodium azide and 2% sucrose.
Reconstitution & Storage	Add 50 ul of distilled water. Final anti-PECI antibody concentration is 1 mg/ml in PBS buffer with 2% sucrose. For longer periods of storage, store at 20°C. Avoid repeat freeze-thaw cycles.
Precautions	PECI antibody - middle region is for research use only and not for use in diagnostic or therapeutic procedures.

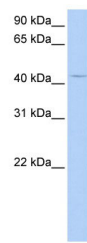
## Protein Information

## References

Feng,X.,(2004)Blood104(8),2425-2431ReconstitutionandStorage:Forshorttermuse,storeat2-8Cupto1week.Forlongtermstorage,storeat-20Cinsmallaliquotstopreventfreeze-thawcycles.

## Images

WB Suggested Anti-PECI Antibody Titration: 0.2-1 µg/ml  
ELISA Titer: 1:62500  
Positive Control: HepG2 cell lysate  
ECI2 is supported by BioGPS gene expression data to be expressed in HepG2



Please note: All products are 'FOR RESEARCH USE ONLY. NOT FOR USE IN DIAGNOSTIC OR THERAPEUTIC PROCEDURES'.