

ATE1 antibody - middle region

Rabbit Polyclonal Antibody

Catalog # AI12937

Product Information

Application	WB
Primary Accession	O95260
Other Accession	NM_007041 , NP_008972
Reactivity	Human, Mouse, Rat, Rabbit, Pig, Dog, Guinea Pig, Horse, Bovine
Predicted	Human, Mouse, Rat, Rabbit, Pig, Chicken, Dog, Horse, Bovine
Host	Rabbit
Clonality	Polyclonal
Calculated MW	59090

Additional Information

Gene ID	11101
Alias Symbol	MGC26724
Other Names	Arginyl-tRNA--protein transferase 1, Arginyltransferase 1, R-transferase 1, 2.3.2.8, Arginine-tRNA--protein transferase 1, ATE1
Format	Liquid. Purified antibody supplied in 1x PBS buffer with 0.09% (w/v) sodium azide and 2% sucrose.
Reconstitution & Storage	Add 50 ul of distilled water. Final anti-ATE1 antibody concentration is 1 mg/ml in PBS buffer with 2% sucrose. For longer periods of storage, store at 20°C. Avoid repeat freeze-thaw cycles.
Precautions	ATE1 antibody - middle region is for research use only and not for use in diagnostic or therapeutic procedures.

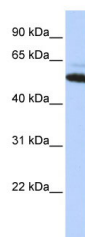
Protein Information

Name	ATE1 {ECO:0000303 PubMed:34893540, ECO:0000312 HGNC:HGNC:782}
Function	Involved in the post-translational conjugation of arginine to the N-terminal aspartate or glutamate of a protein (PubMed: 34893540). This arginylation is required for degradation of the protein via the ubiquitin pathway (PubMed: 34893540). Does not arginylate cysteine residues (By similarity).
Cellular Location	Nucleus. Cytoplasm

References

Hu, R. G., (2006) J. Biol. Chem. 281(43), 32559-32573. Reconstitution and Storage: For short term use, store at 2-8°C up to 1 week. For long term storage, store at -20°C in small aliquots to prevent freeze-thaw cycles.

Images



WB Suggested Anti-ATE1 Antibody Titration: 0.2-1 µg/ml
ELISA Titer: 1:62500
Positive Control: HepG2 cell lysate

Please note: All products are 'FOR RESEARCH USE ONLY. NOT FOR USE IN DIAGNOSTIC OR THERAPEUTIC PROCEDURES'.