

C3orf39 antibody - middle region

Rabbit Polyclonal Antibody

Catalog # AI12968

Product Information

Application	WB
Primary Accession	Q8NAT1
Other Accession	NM_032806 , NP_116195
Reactivity	Human, Mouse, Rat, Rabbit, Pig, Dog, Guinea Pig, Horse, Bovine
Predicted	Bovine
Host	Rabbit
Clonality	Polyclonal
Calculated MW	66615

Additional Information

Gene ID	84892
Alias Symbol Other Names	AGO61, FLJ14566, C3orf39 Protein O-linked-mannose beta-1, 4-N-acetylglucosaminyltransferase 2, POMGnT2, 2.4.1.-, Extracellular O-linked N-acetylglucosamine transferase-like, Glycosyltransferase-like domain-containing protein 2, POMGNT2, AGO61, C3orf39, EOGTL, GTDC2
Format	Liquid. Purified antibody supplied in 1x PBS buffer with 0.09% (w/v) sodium azide and 2% sucrose.
Reconstitution & Storage	Add 100 ul of distilled water. Final anti-C3orf39 antibody concentration is 1 mg/ml in PBS buffer with 2% sucrose. For longer periods of storage, store at 20°C. Avoid repeat freeze-thaw cycles.
Precautions	C3orf39 antibody - middle region is for research use only and not for use in diagnostic or therapeutic procedures.

Protein Information

Name	POMGNT2
Synonyms	AGO61, C3orf39, EOGTL, GTDC2
Function	O-linked mannose beta-1,4-N-acetylglucosaminyltransferase that transfers UDP-N-acetyl-D-glucosamine to the 4-position of the mannose to generate N-acetyl-D-glucosamine-beta-1,4-O-D- mannosylprotein. Involved in the biosynthesis of the phosphorylated O- mannosyl trisaccharide (N-acetylgalactosamine-beta-3-N-acetylglucosamine-beta-4-(phosphate-6-)mannose), a carbohydrate structure

present in alpha-dystroglycan (DAG1), which is required for binding laminin G-like domain-containing extracellular proteins with high affinity.

Cellular Location

Endoplasmic reticulum membrane; Single-pass type II membrane protein

Tissue Location

Highly expressed in the brain, muscle, heart, and kidney in both fetus and adult. In the brain, highest expression in the cortex and cerebellum. Highly expressed in the pancreas

References

Ota T.,et al.Nat. Genet. 36:40-45(2004).

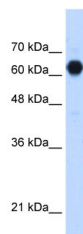
Muzny D.M.,et al.Nature 440:1194-1198(2006).

Mural R.J.,et al.Submitted (JUL-2005) to the EMBL/GenBank/DDBJ databases.

Yoshida-Moriguchi T.,et al.Science 341:896-899(2013).

Manzini M.C.,et al.Am. J. Hum. Genet. 91:541-547(2012).

Images



WB Suggested Anti-C3orf39 Antibody Titration: 1.25µg/ml
Positive Control: HepG2 cell lysate

Please note: All products are 'FOR RESEARCH USE ONLY. NOT FOR USE IN DIAGNOSTIC OR THERAPEUTIC PROCEDURES'.