

PWWP2A antibody - C-terminal region

Rabbit Polyclonal Antibody

Catalog # AI12969

Product Information

Application	WB
Primary Accession	Q96N64
Other Accession	NM_052927 , NP_443159
Reactivity	Human, Mouse, Rat, Rabbit, Dog, Guinea Pig, Horse
Predicted	Rat, Dog, Guinea Pig, Horse
Host	Rabbit
Clonality	Polyclonal
Calculated MW	81960

Additional Information

Gene ID	114825
Alias Symbol	KIAA1935, MGC132770, MST101
Other Names	PWWP domain-containing protein 2A, PWWP2A, KIAA1935, MST101
Format	Liquid. Purified antibody supplied in 1x PBS buffer with 0.09% (w/v) sodium azide and 2% sucrose.
Reconstitution & Storage	Add 50 ul of distilled water. Final anti-PWWP2A antibody concentration is 1 mg/ml in PBS buffer with 2% sucrose. For longer periods of storage, store at 20°C. Avoid repeat freeze-thaw cycles.
Precautions	PWWP2A antibody - C-terminal region is for research use only and not for use in diagnostic or therapeutic procedures.

Protein Information

Name	PWWP2A
Synonyms	KIAA1935, MST101
Function	Chromatin-binding protein that acts as an adapter between distinct nucleosome components (H3K36me3 or H2A.Z) and chromatin- modifying complexes, contributing to the regulation of the levels of histone acetylation at actively transcribed genes (PubMed: 30228260 , PubMed: 30327463). Competes with CHD4 and MBD3 for interaction with MTA1 to form a NuRD subcomplex, preventing the formation of full NuRD complex (containing CHD4 and MBD3), leading to recruitment of HDACs to gene promoters resulting in turn in the deacetylation of nearby H3K27 and H2A.Z (PubMed: 30228260 , PubMed: 30327463). Plays a role in facilitating

transcriptional elongation and repression of spurious transcription initiation through regulation of histone acetylation (By similarity). Essential for proper mitosis progression (PubMed:[28645917](#)).

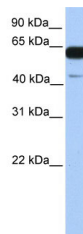
Cellular Location

Nucleus.

References

Nagase T.,et al.DNA Res. 8:179-187(2001).
Ota T.,et al.Nat. Genet. 36:40-45(2004).
Schmutz J.,et al.Nature 431:268-274(2004).
Mural R.J.,et al.Submitted (SEP-2005) to the EMBL/GenBank/DDBJ databases.
Olsen J.V.,et al.Cell 127:635-648(2006).

Images



WB Suggested Anti-PWWP2A Antibody Titration: 0.2-1
µg/ml
Positive Control: Human brain

Please note: All products are 'FOR RESEARCH USE ONLY. NOT FOR USE IN DIAGNOSTIC OR THERAPEUTIC PROCEDURES'.