

Mettl10 antibody - middle region

Rabbit Polyclonal Antibody

Catalog # AI12999

Product Information

Application	WB
Primary Accession	Q9D853
Other Accession	NM_028095 , NP_082371
Reactivity	Human, Mouse, Rat, Rabbit, Dog, Guinea Pig
Predicted	Human, Rat, Rabbit, Pig, Chicken
Host	Rabbit
Clonality	Polyclonal
Calculated MW	26864

Additional Information

Gene ID	72096
Alias Symbol	2010208K18Rik, MGC144343
Other Names	Methyltransferase-like protein 10, 2.1.1.-, Mettl10
Format	Liquid. Purified antibody supplied in 1x PBS buffer with 0.09% (w/v) sodium azide and 2% sucrose.
Reconstitution & Storage	Add 50 ul of distilled water. Final anti-Mettl10 antibody concentration is 1 mg/ml in PBS buffer with 2% sucrose. For longer periods of storage, store at 20°C. Avoid repeat freeze-thaw cycles.
Precautions	Mettl10 antibody - middle region is for research use only and not for use in diagnostic or therapeutic procedures.

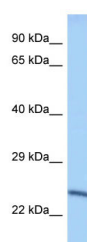
Protein Information

Name	Eef1akmt2 {ECO:0000255 HAMAP-Rule:MF_03188}
Function	Protein-lysine methyltransferase that selectively catalyzes the trimethylation of EEF1A at 'Lys-318'.
Cellular Location	Cytoplasm {ECO:0000255 HAMAP-Rule:MF_03188}. Nucleus {ECO:0000255 HAMAP-Rule:MF_03188}

References

Carninci P., et al. Science 309:1559-1563(2005).

Images



WB Suggested Anti-Mettl10 Antibody Titration: 1.0 μ g/ml
Positive Control: Mouse Spleen

Please note: All products are 'FOR RESEARCH USE ONLY. NOT FOR USE IN DIAGNOSTIC OR THERAPEUTIC PROCEDURES'.