

NDFIP2 antibody - middle region

Rabbit Polyclonal Antibody

Catalog # AI13026

Product Information

Application	WB
Primary Accession	Q9NV92
Other Accession	NM_019080 , NP_061953
Reactivity	Human, Mouse, Rat, Rabbit, Zebrafish, Pig, Dog, Guinea Pig, Horse, Bovine
Predicted	Human, Mouse, Rat, Rabbit, Chicken, Dog, Horse, Bovine
Host	Rabbit
Clonality	Polyclonal
Calculated MW	36390

Additional Information

Gene ID	54602
Alias Symbol	FLJ25842, KIAA1165, N4wbp5a, N4WBP5A
Other Names	NEDD4 family-interacting protein 2, NEDD4 WW domain-binding protein 5A, Putative MAPK-activating protein PM04/PM05/PM06/PM07, Putative NF-kappa-B-activating protein 413, NDFIP2, KIAA1165, N4WBP5A
Format	Liquid. Purified antibody supplied in 1x PBS buffer with 0.09% (w/v) sodium azide and 2% sucrose.
Reconstitution & Storage	Add 50 ul of distilled water. Final anti-NDFIP2 antibody concentration is 1 mg/ml in PBS buffer with 2% sucrose. For longer periods of storage, store at 20°C. Avoid repeat freeze-thaw cycles.
Precautions	NDFIP2 antibody - middle region is for research use only and not for use in diagnostic or therapeutic procedures.

Protein Information

Name	NDFIP2
Synonyms	KIAA1165, N4WBP5A
Function	Activates HECT domain-containing E3 ubiquitin-protein ligases, including ITCH, NEDD4, NEDD4L, SMURF2, WWP1 and WWP2, and consequently modulates the stability of their targets. As a result, may control many cellular processes. Recruits ITCH, NEDD4 and SMURF2 to endosomal membranes. Negatively regulates KCNH2 potassium channel activity by decreasing its cell-surface expression and interfering with channel maturation through recruitment of NEDD4L to the Golgi apparatus and multivesicular body where

it mediates KCNH2 degradation (PubMed:[26363003](#)). May modulate EGFR signaling. Together with NDFIP1, limits the cytokine signaling and expansion of effector Th2 T-cells by promoting degradation of JAK1, probably by ITCH- and NEDD4L-mediated ubiquitination (By similarity).

Cellular Location

Endosome membrane; Multi-pass membrane protein. Golgi apparatus membrane. Endosome, multivesicular body membrane

Tissue Location

Expressed in brain, lung, heart, skeletal muscle, kidney, liver and placenta.

References

Cristillo A.D.,et al.J. Biol. Chem. 278:34587-34597(2003).

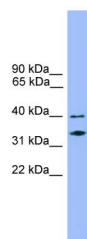
Matsuda A.,et al.Oncogene 22:3307-3318(2003).

Dunham A.,et al.Nature 428:522-528(2004).

Ota T.,et al.Nat. Genet. 36:40-45(2004).

Hirosawa M.,et al.DNA Res. 6:329-336(1999).

Images



WB Suggested Anti-NDFIP2 Antibody Titration: 0.2-1
µg/ml

Positive Control: 721_B cell lysate

Please note: All products are 'FOR RESEARCH USE ONLY. NOT FOR USE IN DIAGNOSTIC OR THERAPEUTIC PROCEDURES'.