

FAM62B antibody - middle region

Rabbit Polyclonal Antibody

Catalog # AI13045

Product Information

Application	WB, IP
Primary Accession	A0FGR8
Other Accession	NM_020728 , NP_065779
Reactivity	Human, Mouse, Rat, Rabbit, Pig, Dog, Guinea Pig, Horse, Bovine
Predicted	Human, Mouse, Rat, Rabbit, Pig, Dog, Guinea Pig, Horse, Bovine
Host	Rabbit
Clonality	Polyclonal
Calculated MW	102357

Additional Information

Gene ID	57488
Alias Symbol	CHR2SYT, ESYT2, KIAA1228, E-Syt2, FAM62B
Other Names	Extended synaptotagmin-2, E-Syt2, Chr2Syt, ESYT2, FAM62B, KIAA1228
Format	Liquid. Purified antibody supplied in 1x PBS buffer with 0.09% (w/v) sodium azide and 2% sucrose.
Reconstitution & Storage	Add 50 ul of distilled water. Final anti-FAM62B antibody concentration is 1 mg/ml in PBS buffer with 2% sucrose. For longer periods of storage, store at 20°C. Avoid repeat freeze-thaw cycles.
Precautions	FAM62B antibody - middle region is for research use only and not for use in diagnostic or therapeutic procedures.

Protein Information

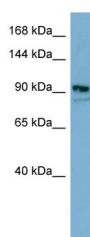
Name	ESYT2 (HGNC:22211)
Synonyms	FAM62B, KIAA1228
Function	Tethers the endoplasmic reticulum to the cell membrane and promotes the formation of appositions between the endoplasmic reticulum and the cell membrane. Binds glycerophospholipids in a barrel-like domain and may play a role in cellular lipid transport. Plays a role in FGF signaling via its role in the rapid internalization of FGFR1 that has been activated by FGF1 binding; this occurs most likely via the AP- 2 complex. Promotes the localization of SACM1L at endoplasmic reticulum-plasma membrane contact sites (EPCS) (PubMed: 27044890).

Cellular Location	Cell membrane; Peripheral membrane protein. Endoplasmic reticulum membrane; Multi-pass membrane protein. Note=Localizes to endoplasmic reticulum-plasma membrane contact sites (EPCS) (PubMed:23791178, PubMed:27044890, PubMed:29469807, PubMed:30220461). Recruited to the cell membrane via the third C2 domain (PubMed:17360437)
Tissue Location	Widely expressed with high level in cerebellum.

References

Min S.-W.,et al.Proc. Natl. Acad. Sci. U.S.A. 104:3823-3828(2007).
Shan Y.X.,et al.Submitted (AUG-2003) to the EMBL/GenBank/DDBJ databases.
Ota T.,et al.Nat. Genet. 36:40-45(2004).
Scherer S.W.,et al.Science 300:767-772(2003).
Nagase T.,et al.DNA Res. 6:337-345(1999).

Images



WB Suggested Anti-FAM62B Antibody Titration: 0.2-1
µg/ml
ELISA Titer: 1:312500
Positive Control: HT1080 cell lysate

Please note: All products are 'FOR RESEARCH USE ONLY. NOT FOR USE IN DIAGNOSTIC OR THERAPEUTIC PROCEDURES'.