

TMEM135 antibody - N-terminal region

Rabbit Polyclonal Antibody

Catalog # AI13075

Product Information

Application	WB, IHC
Primary Accession	Q86UB9
Other Accession	NM_022918 , NP_075069
Reactivity	Human, Mouse, Rat, Rabbit, Pig, Dog, Guinea Pig, Horse, Bovine
Predicted	Human, Mouse, Rabbit, Pig, Chicken, Dog, Guinea Pig, Horse
Host	Rabbit
Clonality	Polyclonal
Calculated MW	52291

Additional Information

Gene ID	65084
Alias Symbol	DKFZp686I1974, FLJ22104, PMP52
Other Names	Transmembrane protein 135, Peroxisomal membrane protein 52, PMP52, TMEM135
Format	Liquid. Purified antibody supplied in 1x PBS buffer with 0.09% (w/v) sodium azide and 2% sucrose.
Reconstitution & Storage	Add 50 ul of distilled water. Final anti-TMEM135 antibody concentration is 1 mg/ml in PBS buffer with 2% sucrose. For longer periods of storage, store at 20°C. Avoid repeat freeze-thaw cycles.
Precautions	TMEM135 antibody - N-terminal region is for research use only and not for use in diagnostic or therapeutic procedures.

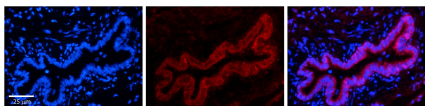
Protein Information

Name	TMEM135 (HGNC:26167)
Function	Involved in mitochondrial metabolism by regulating the balance between mitochondrial fusion and fission. May act as a regulator of mitochondrial fission that promotes DNM1L-dependent fission through activation of DNM1L. May be involved in peroxisome organization.
Cellular Location	Mitochondrion membrane {ECO:0000250 UniProtKB:Q9CYV5}; Multi-pass membrane protein {ECO:0000250 UniProtKB:Q9CYV5}. Peroxisome membrane {ECO:0000250 UniProtKB:Q9CYV5}; Multi-pass membrane protein

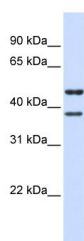
References

Bechtel S.,et al.BMC Genomics 8:399-399(2007).
Taylor T.D.,et al.Nature 440:497-500(2006).
Ota T.,et al.Nat. Genet. 36:40-45(2004).

Images



TMEM135 antibody - N-terminal region (AI13075)
Catalog Number: AI13075
Formalin Fixed Paraffin Embedded Tissue: Human
Bronchial Epithelial Tissue Observed Staining: Membrane
of bronchial epithelial tissue
Primary Antibody
Concentration: 1:100
Secondary Antibody: Donkey anti-Rabbit-Cy3
Secondary Antibody
Concentration: 1:200
Magnification: 20X
Exposure Time: 0.5 - 2.0 sec



WB Suggested Anti-TMEM135 Antibody Titration: 0.2-1
 $\mu\text{g/ml}$
ELISA Titer: 1:312500
Positive Control: Human brain

Please note: All products are 'FOR RESEARCH USE ONLY. NOT FOR USE IN DIAGNOSTIC OR THERAPEUTIC PROCEDURES'.