

# Prrg3 antibody - N-terminal region

Rabbit Polyclonal Antibody

Catalog # AI13085

## Product Information

---

<b>Application</b>	WB
<b>Primary Accession</b>	<a href="#">Q6PAQ9</a>
<b>Other Accession</b>	<a href="#">NM_001081135</a> , <a href="#">NP_001074604</a>
<b>Reactivity</b>	Human, Mouse, Rat, Rabbit, Zebrafish, Dog, Guinea Pig, Horse, Bovine
<b>Predicted</b>	Human, Rat, Chicken, Dog, Guinea Pig, Horse, Bovine
<b>Host</b>	Rabbit
<b>Clonality</b>	Polyclonal
<b>Calculated MW</b>	25877

## Additional Information

---

<b>Gene ID</b>	208748
<b>Alias Symbol</b>	Gm368
<b>Other Names</b>	Transmembrane gamma-carboxyglutamic acid protein 3, Proline-rich gamma-carboxyglutamic acid protein 3, Proline-rich Gla protein 3, Prrg3, Gm368, Tmg3
<b>Format</b>	Liquid. Purified antibody supplied in 1x PBS buffer with 0.09% (w/v) sodium azide and 2% sucrose.
<b>Reconstitution &amp; Storage</b>	Add 50 ul of distilled water. Final anti-Prrg3 antibody concentration is 1 mg/ml in PBS buffer with 2% sucrose. For longer periods of storage, store at 20°C. Avoid repeat freeze-thaw cycles.
<b>Precautions</b>	Prrg3 antibody - N-terminal region is for research use only and not for use in diagnostic or therapeutic procedures.

## Protein Information

---

<b>Name</b>	Prrg3
<b>Synonyms</b>	Gm368, Tmg3
<b>Cellular Location</b>	Membrane; Single-pass type I membrane protein

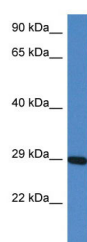
## References

---

Church D.M., et al. PLoS Biol. 7:E1000112-E1000112(2009).

## Images

---



WB Suggested Anti-Prrg3 Antibody Titration: 1.0 µg/ml  
Positive Control: Mouse Heart

Please note: All products are 'FOR RESEARCH USE ONLY. NOT FOR USE IN DIAGNOSTIC OR THERAPEUTIC PROCEDURES'.