

MANEA antibody - middle region

Rabbit Polyclonal Antibody

Catalog # AI13093

Product Information

Application	WB
Primary Accession	Q5SRI9
Other Accession	NM_024641 , NP_078917
Reactivity	Human, Mouse, Rat, Rabbit, Zebrafish, Pig, Dog, Horse
Predicted	Human, Mouse, Rat, Zebrafish, Chicken, Dog, Horse
Host	Rabbit
Clonality	Polyclonal
Calculated MW	53671

Additional Information

Gene ID	79694
Alias Symbol Other Names	DKFZp686D20120, FLJ12838, hEndo, ENDO Glycoprotein endo-alpha-1, 2-mannosidase, Endo-alpha mannosidase, Endomannosidase, hEndo, 3.2.1.130, Mandaselin, MANEA
Format	Liquid. Purified antibody supplied in 1x PBS buffer with 0.09% (w/v) sodium azide and 2% sucrose.
Reconstitution & Storage	Add 50 ul of distilled water. Final anti-MANEA antibody concentration is 1 mg/ml in PBS buffer with 2% sucrose. For longer periods of storage, store at 20°C. Avoid repeat freeze-thaw cycles.
Precautions	MANEA antibody - middle region is for research use only and not for use in diagnostic or therapeutic procedures.

Protein Information

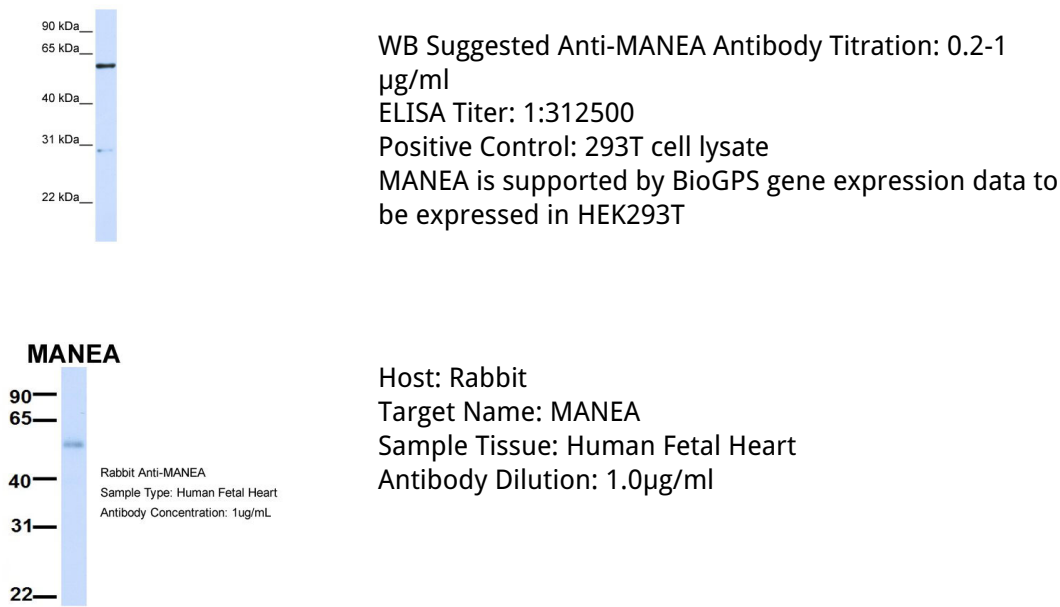
Name	MANEA
Cellular Location	Golgi apparatus membrane; Single-pass type II membrane protein
Tissue Location	Highly expressed in the liver and kidney. Expressed at lower levels in muscle, pancreas, heart, placenta, lung and brain

References

Hardt B.,et al.Biochimie 87:169-179(2005).

Hamilton S.R.,et al.Glycobiology 15:615-624(2005).
Ota T.,et al.Nat. Genet. 36:40-45(2004).
Bechtel S.,et al.BMC Genomics 8:399-399(2007).
Mungall A.J.,et al.Nature 425:805-811(2003).

Images



Please note: All products are 'FOR RESEARCH USE ONLY. NOT FOR USE IN DIAGNOSTIC OR THERAPEUTIC PROCEDURES'.