

AMN antibody - N-terminal region

Rabbit Polyclonal Antibody

Catalog # AI13110

Product Information

Application	WB
Primary Accession	Q9BXJ7
Other Accession	NM_030943 , NP_112205
Reactivity	Human, Mouse, Rat, Zebrafish, Pig, Dog, Guinea Pig, Horse, Bovine
Predicted	Human, Mouse, Rat, Pig, Dog, Guinea Pig, Horse, Bovine
Host	Rabbit
Clonality	Polyclonal
Calculated MW	47754

Additional Information

Gene ID	81693
Alias Symbol	PRO1028
Other Names	Protein amnionless, AMN
Format	Liquid. Purified antibody supplied in 1x PBS buffer with 0.09% (w/v) sodium azide and 2% sucrose.
Reconstitution & Storage	Add 50 ul of distilled water. Final anti-AMN antibody concentration is 1 mg/ml in PBS buffer with 2% sucrose. For longer periods of storage, store at 20°C. Avoid repeat freeze-thaw cycles.
Precautions	AMN antibody - N-terminal region is for research use only and not for use in diagnostic or therapeutic procedures.

Protein Information

Name	AMN
Function	Membrane-bound component of the endocytic receptor formed by AMN and CUBN (PubMed: 14576052 , PubMed: 29402915 , PubMed: 30523278). Required for normal CUBN glycosylation and trafficking to the cell surface (PubMed: 14576052 , PubMed: 29402915). The complex formed by AMN and CUBN is required for efficient absorption of vitamin B12 (PubMed: 12590260 , PubMed: 14576052 , PubMed: 26040326). Required for normal CUBN-mediated protein transport in the kidney (Probable).
Cellular Location	[Isoform 1]: Apical cell membrane; Single-pass type I membrane protein. Cell membrane; Single-pass type I membrane protein. Endosome membrane Membrane, coated pit

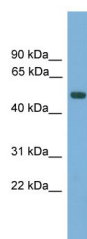
Tissue Location

Detected in proximal tubules in the kidney cortex (at protein level) (PubMed:14576052, PubMed:29402915). Long isoforms are highly expressed in small intestine, colon and kidney (renal proximal tubule epithelial cells). Shorter isoforms are detected at lower levels in testis, thymus and peripheral blood leukocytes

References

Kalantry S.,et al.Nat. Genet. 27:412-416(2001).
Heilig R.,et al.Nature 421:601-607(2003).
Clark H.F.,et al.Genome Res. 13:2265-2270(2003).
Tanner S.M.,et al.Nat. Genet. 33:426-429(2003).
Fyfe J.C.,et al.Blood 103:1573-1579(2004).

Images



WB Suggested Anti-AMN Antibody Titration: 0.2-1 µg/ml
Positive Control: Human Liver

Please note: All products are 'FOR RESEARCH USE ONLY. NOT FOR USE IN DIAGNOSTIC OR THERAPEUTIC PROCEDURES'.