

C15orf48 antibody - N-terminal region

Rabbit Polyclonal Antibody

Catalog # AI13122

Product Information

Application	WB
Primary Accession	Q9C002
Other Accession	NM_032413 , NP_115789
Reactivity	Human, Mouse, Rat, Rabbit, Zebrafish, Dog, Guinea Pig, Horse, Bovine
Predicted	Dog, Guinea Pig
Host	Rabbit
Clonality	Polyclonal
Calculated MW	9617

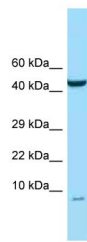
Additional Information

Gene ID	84419
Alias Symbol	FLJ22645, FOAP-11, MGC32925, NMES1
Other Names	Normal mucosa of esophagus-specific gene 1 protein, Protein FOAP-11, NMES1, C15orf48
Format	Liquid. Purified antibody supplied in 1x PBS buffer with 0.09% (w/v) sodium azide and 2% sucrose.
Reconstitution & Storage	Add 50 ul of distilled water. Final anti-C15orf48 antibody concentration is 1 mg/ml in PBS buffer with 2% sucrose. For longer periods of storage, store at 20°C. Avoid repeat freeze-thaw cycles.
Precautions	C15orf48 antibody - N-terminal region is for research use only and not for use in diagnostic or therapeutic procedures.

Protein Information

Name	NMES1
Synonyms	C15orf48
Cellular Location	Nucleus.
Tissue Location	Expressed mainly in stomach, placenta, small intestine and colon, as well as in normal mucosa of esophagus. Down- regulated in esophageal squamous cell carcinoma

Images



WB Suggested Anti-C15orf48 Antibody Titration: 1.0 µg/ml
Positive Control: PANC1 Whole Cell

Please note: All products are 'FOR RESEARCH USE ONLY. NOT FOR USE IN DIAGNOSTIC OR THERAPEUTIC PROCEDURES'.