

SLITRK1 antibody - N-terminal region

Rabbit Polyclonal Antibody

Catalog # AI13147

Product Information

Application	WB
Primary Accession	Q96PX8
Other Accession	NM_052910 , NP_443142
Reactivity	Human, Mouse, Rat, Rabbit, Zebrafish, Pig, Dog, Guinea Pig, Horse, Bovine
Predicted	Mouse, Rat, Rabbit, Pig, Chicken, Horse, Bovine
Host	Rabbit
Clonality	Polyclonal
Calculated MW	77735

Additional Information

Gene ID	114798
Alias Symbol	KIAA0918, KIAA1910, LRRC12, RP11-395N17.1, TTM
Other Names	SLIT and NTRK-like protein 1, Leucine-rich repeat-containing protein 12, SLITRK1, KIAA1910, LRRC12
Format	Liquid. Purified antibody supplied in 1x PBS buffer with 0.09% (w/v) sodium azide and 2% sucrose.
Reconstitution & Storage	Add 50 ul of distilled water. Final anti-SLITRK1 antibody concentration is 1 mg/ml in PBS buffer with 2% sucrose. For longer periods of storage, store at 20°C. Avoid repeat freeze-thaw cycles.
Precautions	SLITRK1 antibody - N-terminal region is for research use only and not for use in diagnostic or therapeutic procedures.

Protein Information

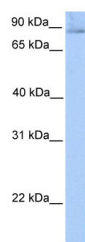
Name	SLITRK1
Synonyms	KIAA1910, LRRC12
Function	It is involved in synaptogenesis and promotes excitatory synapse differentiation (PubMed: 27273464 , PubMed: 27812321). Enhances neuronal dendrite outgrowth (PubMed: 16224024 , PubMed: 19640509).
Cellular Location	Membrane; Single-pass type I membrane protein. Secreted Synapse {ECO:0000250 UniProtKB:Q810C1}
Tissue Location	Expressed predominantly in the frontal lobe of the cerebral cortex of the

brain. Also expressed in some astrocytic brain tumors such as astrocytomas, oligodendrogliomas, glioblastomas, gangliogliomas and primitive neuroectodermal tumors

References

Nagase T.,et al.DNA Res. 8:179-187(2001).
Clark H.F.,et al.Genome Res. 13:2265-2270(2003).
Dunham A.,et al.Nature 428:522-528(2004).
Aruga J.,et al.Gene 315:87-94(2003).
Abelson J.F.,et al.Science 310:317-320(2005).

Images



WB Suggested Anti-SLITRK1 Antibody Titration: 0.2-1
µg/ml
Positive Control: Human Lung

Please note: All products are 'FOR RESEARCH USE ONLY. NOT FOR USE IN DIAGNOSTIC OR THERAPEUTIC PROCEDURES'.