

PWP1 antibody - C-terminal region

Rabbit Polyclonal Antibody

Catalog # AI13187

Product Information

Application	WB
Primary Accession	Q13610
Other Accession	NM_007062 , NP_008993
Reactivity	Human, Mouse, Rat, Rabbit, Dog, Guinea Pig, Horse, Bovine
Predicted	Human, Mouse, Rat, Rabbit, Dog, Guinea Pig, Horse, Bovine
Host	Rabbit
Clonality	Polyclonal
Calculated MW	55828

Additional Information

Gene ID	11137
Alias Symbol	IEF-SSP-9502
Other Names	Periodic tryptophan protein 1 homolog, Keratinocyte protein IEF SSP 9502, PWP1
Format	Liquid. Purified antibody supplied in 1x PBS buffer with 0.09% (w/v) sodium azide and 2% sucrose.
Reconstitution & Storage	Add 50 ul of distilled water. Final anti-PWP1 antibody concentration is 1 mg/ml in PBS buffer with 2% sucrose. For longer periods of storage, store at 20°C. Avoid repeat freeze-thaw cycles.
Precautions	PWP1 antibody - C-terminal region is for research use only and not for use in diagnostic or therapeutic procedures.

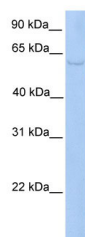
Protein Information

Name	PWP1
Function	Chromatin-associated factor that regulates transcription (PubMed: 29065309). Regulates Pol I-mediated rRNA biogenesis and, probably, Pol III-mediated transcription (PubMed: 29065309). Regulates the epigenetic status of rDNA (PubMed: 29065309).
Cellular Location	Nucleus. Nucleus, nucleolus. Chromosome. Note=Associates with chromatin regions of rDNA.
Tissue Location	High levels seen in the placenta, skeletal muscle, kidney and pancreas while lower levels were seen in the heart, brain and lung

References

Honore B.,et al.Gene 151:291-296(1994).
Ota T.,et al.Nat. Genet. 36:40-45(2004).
Scherer S.E.,et al.Nature 440:346-351(2006).
Mural R.J.,et al.Submitted (JUL-2005) to the EMBL/GenBank/DDBJ databases.
Olsen J.V.,et al.Cell 127:635-648(2006).

Images



WB Suggested Anti-PWP1 Antibody Titration: 0.2-1 µg/ml
Positive Control: HepG2 cell lysate

Please note: All products are 'FOR RESEARCH USE ONLY. NOT FOR USE IN DIAGNOSTIC OR THERAPEUTIC PROCEDURES'.