

Plekhf2 antibody - N-terminal region

Rabbit Polyclonal Antibody

Catalog # AI13203

Product Information

Application	WB
Primary Accession	Q91WB4
Other Accession	NM_175175 , NP_780384
Reactivity	Human, Mouse, Rat, Rabbit, Guinea Pig, Horse, Bovine
Predicted	Mouse, Rat, Chicken, Dog, Bovine
Host	Rabbit
Clonality	Polyclonal
Calculated MW	27755

Additional Information

Gene ID	71801
Alias Symbol	1110070J07Rik, AA673237, ZFYVE18
Other Names	Pleckstrin homology domain-containing family F member 2, PH domain-containing family F member 2, Plekhf2
Format	Liquid. Purified antibody supplied in 1x PBS buffer with 0.09% (w/v) sodium azide and 2% sucrose.
Reconstitution & Storage	Add 50 ul of distilled water. Final anti-Plekhf2 antibody concentration is 1 mg/ml in PBS buffer with 2% sucrose. For longer periods of storage, store at 20°C. Avoid repeat freeze-thaw cycles.
Precautions	Plekhf2 antibody - N-terminal region is for research use only and not for use in diagnostic or therapeutic procedures.

Protein Information

Name	Plekhf2
Function	May play a role in early endosome fusion upstream of RAB5, hence regulating receptor trafficking and fluid-phase transport (By similarity). Enhances cellular sensitivity to TNF-induced apoptosis.
Cellular Location	Early endosome membrane {ECO:0000250 UniProtKB:Q9H8W4}; Peripheral membrane protein {ECO:0000250 UniProtKB:Q9H8W4}. Endoplasmic reticulum {ECO:0000250 UniProtKB:Q9H8W4}. Note=Colocalizes with EEA1 and RAB5 at endosomal membrane fusion hot spots. May translocate to the endoplasmic reticulum in the early phase of apoptosis {ECO:0000250 UniProtKB:Q9H8W4}

Tissue Location

Expressed in brain, stomach and thymus, as well as in kidney, spleen, and skeletal muscle. Also expressed in peripheral blood mononuclear cells and dendritic cells

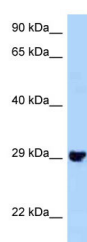
References

Carninci P.,et al.Science 309:1559-1563(2005).

Li C.,et al.J. Mol. Med. 86:471-484(2008).

Trost M.,et al.Immunity 30:143-154(2009).

Images



WB Suggested Anti-Plekhf2 Antibody Titration: 1.0 µg/ml
Positive Control: Mouse Kidney

Please note: All products are 'FOR RESEARCH USE ONLY. NOT FOR USE IN DIAGNOSTIC OR THERAPEUTIC PROCEDURES'.