

Scel antibody - C-terminal region

Rabbit Polyclonal Antibody

Catalog # AI13225

Product Information

Application	WB
Primary Accession	Q9EQG3
Other Accession	NM_001108388 , NP_001101858
Reactivity	Human, Mouse, Rat, Rabbit, Dog, Horse, Bovine
Predicted	Human, Mouse, Rat, Rabbit, Dog, Horse, Bovine
Host	Rabbit
Clonality	Polyclonal
Calculated MW	72972

Additional Information

Gene ID	64929
Alias Symbol	Scel
Other Names	Sciellin, Scel
Format	Liquid. Purified antibody supplied in 1x PBS buffer with 0.09% (w/v) sodium azide and 2% sucrose.
Reconstitution & Storage	Add 50 ul of distilled water. Final anti-Scel antibody concentration is 1 mg/ml in PBS buffer with 2% sucrose. For longer periods of storage, store at 20°C. Avoid repeat freeze-thaw cycles.
Precautions	Scel antibody - C-terminal region is for research use only and not for use in diagnostic or therapeutic procedures.

Protein Information

Name	Scel
Function	May function in the assembly or regulation of proteins in the cornified envelope. The LIM domain may be involved in homotypic or heterotypic associations and may function to localize sciellin to the cornified envelope (By similarity).
Cellular Location	Cytoplasm. Membrane. Note=May become cross-linked to membrane proteins by transglutaminase
Tissue Location	Expressed in the upper layers of stratified epithelia, including, ependyma and choroid plexus of the brain ventricles

References

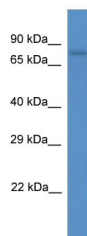
Champlaud M.-F., et al. Genomics 70:264-268(2000).

Champlaud M.-F., et al. Submitted (JUL-2005) to the EMBL/GenBank/DDBJ databases.

Carninci P., et al. Science 309:1559-1563(2005).

Park J., et al. Mol. Cell 50:919-930(2013).

Images



WB Suggested Anti-Scel Antibody Titration: 1.0 µg/ml
Positive Control: Rat Heart

Please note: All products are 'FOR RESEARCH USE ONLY. NOT FOR USE IN DIAGNOSTIC OR THERAPEUTIC PROCEDURES'.