

LCN6 antibody - middle region

Rabbit Polyclonal Antibody

Catalog # AI13276

Product Information

Application	WB
Primary Accession	P62502
Other Accession	NM_198946 , NP_945184
Reactivity	Human, Dog
Predicted	Human, Dog
Host	Rabbit
Clonality	Polyclonal
Calculated MW	18045

Additional Information

Gene ID	158062
Alias Symbol	LCN5, UNQ643, hLcn5
Other Names	Epididymal-specific lipocalin-6, Lipocalin-5, LCN6, LCN5
Format	Liquid. Purified antibody supplied in 1x PBS buffer with 0.09% (w/v) sodium azide and 2% sucrose.
Reconstitution & Storage	Add 50 ul of distilled water. Final anti-LCN6 antibody concentration is 1 mg/ml in PBS buffer with 2% sucrose. For longer periods of storage, store at 20°C. Avoid repeat freeze-thaw cycles.
Precautions	LCN6 antibody - middle region is for research use only and not for use in diagnostic or therapeutic procedures.

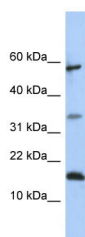
Protein Information

Name	LCN6
Synonyms	LCN5
Function	May play a role in male fertility.
Cellular Location	Secreted. Note=Located on the head and tail of spermatozoa with the highest concentration on the post-acrosomal region of the head, where it appears aggregated into large patches
Tissue Location	Predominantly expressed in epididymis.

References

Hamil K.G.,et al.Reprod. Biol. Endocrinol. 1:112-112(2003).
Suzuki K.,et al.Gene 339:49-59(2004).
Clark H.F.,et al.Genome Res. 13:2265-2270(2003).
Humphray S.J.,et al.Nature 429:369-374(2004).
Mural R.J.,et al.Submitted (JUL-2005) to the EMBL/GenBank/DDBJ databases.

Images



WB Suggested Anti-LCN6 Antibody Titration: 0.2-1 µg/ml
ELISA Titer: 1:12500
Positive Control: 721_B cell lysate

Please note: All products are 'FOR RESEARCH USE ONLY. NOT FOR USE IN DIAGNOSTIC OR THERAPEUTIC PROCEDURES'.