

# RSRC2 antibody - C-terminal region

Rabbit Polyclonal Antibody

Catalog # AI13278

## Product Information

---

<b>Application</b>	WB, IHC
<b>Primary Accession</b>	<a href="#">Q7L4I2</a>
<b>Other Accession</b>	<a href="#">NM_023012</a> , <a href="#">NP_075388</a>
<b>Reactivity</b>	Human, Mouse, Rat, Rabbit, Pig, Dog, Guinea Pig, Horse, Bovine
<b>Predicted</b>	Human, Mouse, Rat, Rabbit, Pig, Chicken, Dog, Guinea Pig, Horse, Bovine
<b>Host</b>	Rabbit
<b>Clonality</b>	Polyclonal
<b>Calculated MW</b>	50560

## Additional Information

---

<b>Gene ID</b>	65117
<b>Alias Symbol</b>	FLJ11021
<b>Other Names</b>	Arginine/serine-rich coiled-coil protein 2, RSRC2
<b>Format</b>	Liquid. Purified antibody supplied in 1x PBS buffer with 0.09% (w/v) sodium azide and 2% sucrose.
<b>Reconstitution &amp; Storage</b>	Add 100 ul of distilled water. Final anti-RSRC2 antibody concentration is 1 mg/ml in PBS buffer with 2% sucrose. For longer periods of storage, store at 20°C. Avoid repeat freeze-thaw cycles.
<b>Precautions</b>	RSRC2 antibody - C-terminal region is for research use only and not for use in diagnostic or therapeutic procedures.

## Protein Information

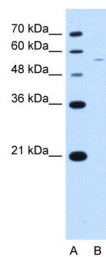
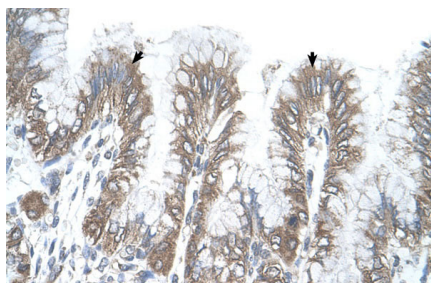
---

<b>Name</b>	RSRC2
-------------	-------

## Images

---

Human Stomach



WB Suggested Antibody Titration: 2.5 µg/ml  
 Positive Control: JurkatRSC2 is strongly supported by  
 BioGPS gene expression data to be expressed in Human  
 Jurkat cells

Please note: All products are 'FOR RESEARCH USE ONLY. NOT FOR USE IN DIAGNOSTIC OR THERAPEUTIC PROCEDURES'.