

# FHL5 antibody - middle region

Rabbit Polyclonal Antibody

Catalog # AI13308

## Product Information

---

<b>Application</b>	WB
<b>Primary Accession</b>	<a href="#">Q5TD97</a>
<b>Other Accession</b>	<a href="#">NM_020482</a> , <a href="#">NP_065228</a>
<b>Reactivity</b>	Human, Mouse, Rat, Rabbit, Pig, Dog, Guinea Pig, Horse, Bovine
<b>Predicted</b>	Human, Mouse, Rat, Pig, Dog, Guinea Pig, Bovine
<b>Host</b>	Rabbit
<b>Clonality</b>	Polyclonal
<b>Calculated MW</b>	32720

## Additional Information

---

<b>Gene ID</b>	9457
<b>Alias Symbol</b>	ACT, FLJ33049, KIAA0776, RP3-393D12.2, dj393D12.2
<b>Other Names</b>	Four and a half LIM domains protein 5, FHL-5, Activator of cAMP-responsive element modulator in testis, Activator of CREM in testis, FHL5, ACT
<b>Format</b>	Liquid. Purified antibody supplied in 1x PBS buffer with 0.09% (w/v) sodium azide and 2% sucrose.
<b>Reconstitution &amp; Storage</b>	Add 50 ul of distilled water. Final anti-FHL5 antibody concentration is 1 mg/ml in PBS buffer with 2% sucrose. For longer periods of storage, store at 20°C. Avoid repeat freeze-thaw cycles.
<b>Precautions</b>	FHL5 antibody - middle region is for research use only and not for use in diagnostic or therapeutic procedures.

## Protein Information

---

<b>Name</b>	FHL5
<b>Synonyms</b>	ACT
<b>Function</b>	May be involved in the regulation of spermatogenesis. Stimulates CREM transcriptional activity in a phosphorylation- independent manner.
<b>Cellular Location</b>	Nucleus. Note=Nuclei of round and elongated spermatids
<b>Tissue Location</b>	Testis-specific (at protein level).

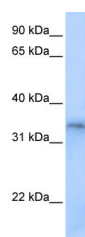
## References

---

Palermo I.,et al.Biochem. Biophys. Res. Commun. 283:406-411(2001).  
Ota T.,et al.Nat. Genet. 36:40-45(2004).  
Totoki Y.,et al.Submitted (APR-2005) to the EMBL/GenBank/DDBJ databases.  
Mungall A.J.,et al.Nature 425:805-811(2003).  
Mural R.J.,et al.Submitted (SEP-2005) to the EMBL/GenBank/DDBJ databases.

## Images

---



WB Suggested Anti-FHL5 Antibody Titration: 0.2-1 µg/ml  
Positive Control: Human Placenta

Please note: All products are 'FOR RESEARCH USE ONLY. NOT FOR USE IN DIAGNOSTIC OR THERAPEUTIC PROCEDURES'.