

KLHDC5 antibody - middle region

Rabbit Polyclonal Antibody

Catalog # AI13309

Product Information

Application	WB
Primary Accession	Q9P2K6
Other Accession	NM_020782 , NP_065833
Reactivity	Human, Mouse, Rat, Rabbit, Dog, Guinea Pig, Horse, Bovine
Predicted	Human, Mouse, Rat, Rabbit, Pig, Chicken, Dog, Guinea Pig, Horse, Bovine
Host	Rabbit
Clonality	Polyclonal
Calculated MW	56868

Additional Information

Gene ID	57542
Alias Symbol	KIAA1340, MGC131714, Ctb9, KLHDC5
Other Names	Kelch-like protein 42, Cullin-3-binding protein 9, Ctb9, Kelch domain-containing protein 5, KLHL42, KIAA1340, KLHDC5
Format	Liquid. Purified antibody supplied in 1x PBS buffer with 0.09% (w/v) sodium azide and 2% sucrose.
Reconstitution & Storage	Add 50 ul of distilled water. Final anti-KLHDC5 antibody concentration is 1 mg/ml in PBS buffer with 2% sucrose. For longer periods of storage, store at 20°C. Avoid repeat freeze-thaw cycles.
Precautions	KLHDC5 antibody - middle region is for research use only and not for use in diagnostic or therapeutic procedures.

Protein Information

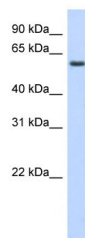
Name	KLHL42
Synonyms	KIAA1340, KLHDC5
Function	Substrate-specific adapter of a BCR (BTB-CUL3-RBX1) E3 ubiquitin-protein ligase complex required for mitotic progression and cytokinesis. The BCR(KLHL42) E3 ubiquitin ligase complex mediates the ubiquitination and subsequent degradation of KATNA1. Involved in microtubule dynamics throughout mitosis.
Cellular Location	Cytoplasm. Cytoplasm, cytoskeleton, spindle Note=Predominantly in mitotic cells. Localized diffusely in the cytoplasm during the interphase. During

metaphase is localized throughout the cell and more widely dispersed than the microtubules. In anaphase cells is localized between the two sets of separated chromosomes as well as at the spindle poles. During telophase is localized around the nuclei of the two daughter cells. Not detected at the midbody region during cytokinesis

References

Scherer S.E.,et al.Nature 440:346-351(2006).
Nagase T.,et al.DNA Res. 7:65-73(2000).
Matsuoka S.,et al.Science 316:1160-1166(2007).
Cummings C.M.,et al.J. Biol. Chem. 284:11663-11675(2009).

Images



WB Suggested Anti-KLHDC5 Antibody Titration: 0.2-1
µg/ml
ELISA Titer: 1:62500
Positive Control: Transfected 293T

Please note: All products are 'FOR RESEARCH USE ONLY. NOT FOR USE IN DIAGNOSTIC OR THERAPEUTIC PROCEDURES'.