

C14orf28 antibody - middle region

Rabbit Polyclonal Antibody

Catalog # AI13332

Product Information

Application	WB
Primary Accession	Q4W4Y0
Other Accession	NM_001017923 , NP_001017923
Reactivity	Human, Mouse, Rat, Rabbit, Pig, Dog, Guinea Pig, Horse, Bovine
Predicted	Human, Dog
Host	Rabbit
Clonality	Polyclonal
Calculated MW	36306

Additional Information

Gene ID	122525
Alias Symbol	DRIP1, c14_5270
Other Names	Uncharacterized protein C14orf28, Dopamine receptor-interacting protein 1, C14orf28, DRIP1
Format	Liquid. Purified antibody supplied in 1x PBS buffer with 0.09% (w/v) sodium azide and 2% sucrose.
Reconstitution & Storage	Add 50 ul of distilled water. Final anti-C14orf28 antibody concentration is 1 mg/ml in PBS buffer with 2% sucrose. For longer periods of storage, store at 20°C. Avoid repeat freeze-thaw cycles.
Precautions	C14orf28 antibody - middle region is for research use only and not for use in diagnostic or therapeutic procedures.

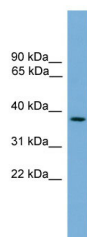
Protein Information

Name	DORIP1 (HGNC:19834)
Synonyms	C14orf28, DRIP1
Function	Could be a regulator of the dopamine receptor signaling pathway.

References

Lafuente M.J.,et al.Submitted (MAR-2000) to the EMBL/GenBank/DDBJ databases.

Images



WB Suggested Anti-C14orf28 Antibody Titration: 0.2-1
µg/ml
ELISA Titer: 1:312500
Positive Control: Human Muscle

Please note: All products are 'FOR RESEARCH USE ONLY. NOT FOR USE IN DIAGNOSTIC OR THERAPEUTIC PROCEDURES'.