

Gm527 antibody - C-terminal region

Rabbit Polyclonal Antibody

Catalog # AI13333

Product Information

Application	WB
Primary Accession	Q4KL13
Other Accession	NM_001025605 , NP_001020776
Reactivity	Human, Mouse, Rat, Rabbit, Pig, Dog, Guinea Pig, Horse, Bovine
Predicted	Human, Mouse, Rat, Rabbit, Pig, Dog, Guinea Pig, Horse, Bovine
Host	Rabbit
Clonality	Polyclonal
Calculated MW	36304

Additional Information

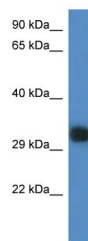
Gene ID	217648
Alias Symbol	MGC117765
Other Names	Uncharacterized protein C14orf28 homolog, Gm527
Format	Liquid. Purified antibody supplied in 1x PBS buffer with 0.09% (w/v) sodium azide and 2% sucrose.
Reconstitution & Storage	Add 50 ul of distilled water. Final anti-Gm527 antibody concentration is 1 mg/ml in PBS buffer with 2% sucrose. For longer periods of storage, store at 20°C. Avoid repeat freeze-thaw cycles.
Precautions	Gm527 antibody - C-terminal region is for research use only and not for use in diagnostic or therapeutic procedures.

Protein Information

Name	Dorip1
Synonyms	Gm527
Function	Could be a regulator of the dopamine receptor signaling pathway.

Images

WB Suggested Anti-Gm527 Antibody Titration: 1.0 µg/ml
Positive Control: Mouse Spleen



Please note: All products are 'FOR RESEARCH USE ONLY. NOT FOR USE IN DIAGNOSTIC OR THERAPEUTIC PROCEDURES'.