

Gcom1 antibody - middle region

Rabbit Polyclonal Antibody

Catalog # AI13334

Product Information

Application	WB
Primary Accession	P0CAP1
Other Accession	NM_001018091 , NP_001018101
Reactivity	Human, Mouse, Rat, Rabbit, Zebrafish, Dog, Guinea Pig, Horse, Bovine, Yeast
Predicted	Human, Mouse, Rat, Rabbit, Pig, Dog, Guinea Pig, Horse, Bovine
Host	Rabbit
Clonality	Polyclonal
Calculated MW	54206

Additional Information

Gene ID	100820829;145781
Alias Symbol	FLJ30973, GRINL1A, Gcom2, Gup1, Gup2, MGC126694, MGC138353, gcom, MYZAP-POLR2M
Other Names	Myocardial zonula adherens protein, GRINL1A upstream protein, Gup, MYZAP, MYOZAP
Format	Liquid. Purified antibody supplied in 1x PBS buffer with 0.09% (w/v) sodium azide and 2% sucrose.
Reconstitution & Storage	Add 50 ul of distilled water. Final anti-Gcom1 antibody concentration is 1 mg/ml in PBS buffer with 2% sucrose. For longer periods of storage, store at 20°C. Avoid repeat freeze-thaw cycles.
Precautions	Gcom1 antibody - middle region is for research use only and not for use in diagnostic or therapeutic procedures.

Protein Information

Name	MYZAP
Synonyms	MYOZAP
Function	Plays a role in cellular signaling via Rho-related GTP- binding proteins and subsequent activation of transcription factor SRF (By similarity). Targets TJP1 to cell junctions. In cortical neurons, may play a role in glutaminergic signal transduction through interaction with the NMDA receptor subunit GRIN1 (By similarity).
Cellular Location	Cytoplasm, cytoskeleton {ECO:0000250 UniProtKB:Q5EB94}. Cell membrane

{ECO:0000250|UniProtKB:Q5EB94}; Peripheral membrane protein
{ECO:0000250|UniProtKB:Q5EB94}; Cytoplasmic side
{ECO:0000250|UniProtKB:Q5EB94}. Cytoplasm, myofibril, sarcomere, I band
{ECO:0000250|UniProtKB:Q5EB94}. Cytoplasm, myofibril, sarcomere, Z line
{ECO:0000250|UniProtKB:Q5EB94}. Cell junction Note=Detected predominantly at the intercalated disk in cardiomyocytes, and at low levels on sarcomeric Z disks. Colocalizes with F-actin Colocalizes with cortical actin.
{ECO:0000250|UniProtKB:Q5EB94}

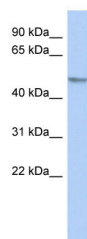
Tissue Location

Detected in heart, liver, skeletal muscle, placenta, small intestine, lung, prostate and testis. Expressed in arrector pili muscle (at protein level)
(PubMed:29034528)

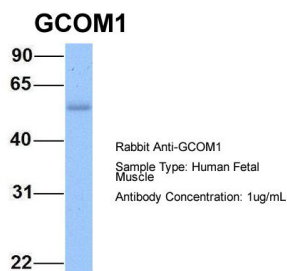
References

Roginski R.S.,et al.Genomics 84:265-276(2004).
Seeger T.S.,et al.Circ. Res. 106:880-890(2010).
Ota T.,et al.Nat. Genet. 36:40-45(2004).
Zody M.C.,et al.Nature 440:671-675(2006).
Mural R.J.,et al.Submitted (JUL-2005) to the EMBL/GenBank/DDBJ databases.

Images



WB Suggested Anti-Gcom1 Antibody Titration: 0.2-1 µg/ml
ELISA Titer: 1:62500
Positive Control: COLO205 cell lysate
Gcom1 is strongly supported by BioGPS gene expression data to be expressed in Human COLO205 cells



Host:Rabbit
Target Name:GCOM1
Sample Tissue:Human Fetal Muscle
Antibody Dilution: 1.0µg/ml

Please note: All products are 'FOR RESEARCH USE ONLY. NOT FOR USE IN DIAGNOSTIC OR THERAPEUTIC PROCEDURES'.