

Csnk1a1 Antibody - N-terminal region

Rabbit Polyclonal Antibody

Catalog # AI13336

Product Information

Application	WB
Primary Accession	P97633
Other Accession	NM_053615 , NP_446067
Reactivity	Human, Mouse, Rat, Rabbit, Zebrafish, Pig, Dog, Guinea Pig, Horse, Bovine, Sheep
Predicted	Human, Mouse, Rat, Rabbit, Zebrafish, Pig, Dog, Guinea Pig, Horse, Bovine, Sheep
Host	Rabbit
Clonality	Polyclonal
Calculated MW	37495

Additional Information

Gene ID	113927
Alias Symbol	MGC156603
Other Names	Casein kinase I isoform alpha, CKI-alpha, 2.7.11.1, CK1, Csnk1a1
Format	Liquid. Purified antibody supplied in 1x PBS buffer with 0.09% (w/v) sodium azide and 2% sucrose.
Reconstitution & Storage	Add 50 ul of distilled water. Final anti-Csnk1a1 antibody concentration is 1 mg/ml in PBS buffer with 2% sucrose. For longer periods of storage, store at 20°C. Avoid repeat freeze-thaw cycles.
Precautions	Csnk1a1 Antibody - N-terminal region is for research use only and not for use in diagnostic or therapeutic procedures.

Protein Information

Name	Csnk1a1
Function	Casein kinases are operationally defined by their preferential utilization of acidic proteins such as caseins as substrates (By similarity). Can phosphorylate a large number of proteins (By similarity). Participates in Wnt signaling (PubMed: 11955436). Phosphorylates CTNNB1 at 'Ser-45' (By similarity). May phosphorylate PER1 and PER2 (By similarity). May play a role in segregating chromosomes during mitosis. May play a role in keratin cytoskeleton disassembly and thereby, it may regulate epithelial cell migration (By similarity). Acts as a positive regulator of mTORC1 and mTORC2 signaling in response to nutrients by mediating phosphorylation of DEPTOR inhibitor (By similarity). Acts as an inhibitor of NLRP3 inflammasome

assembly by mediating phosphorylation of NLRP3 (By similarity).

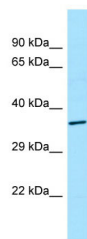
Cellular Location

Cytoplasm {ECO:0000250|UniProtKB:P48729}. Cytoplasm, cytoskeleton, microtubule organizing center, centrosome {ECO:0000250|UniProtKB:P48729}. Chromosome, centromere, kinetochore {ECO:0000250|UniProtKB:P48729}. Nucleus speckle {ECO:0000250|UniProtKB:P48729}. Cytoplasm, cytoskeleton, cilium basal body {ECO:0000250|UniProtKB:Q8BK63}. Cytoplasm, cytoskeleton, spindle {ECO:0000250|UniProtKB:Q8BK63}. Note=Localizes to the centrosome in interphase cells, and to kinetochore fibers during mitosis. Also recruited to the keratin cytoskeleton. {ECO:0000250|UniProtKB:P48729}

References

Zhang J.,et al.Biochemistry 35:16319-16327(1996).
Liu C.,et al.Cell 108:837-847(2002).

Images



WB Suggested Anti-Csnk1a1 Antibody Titration: 1.0 µg/ml
Positive Control: Rat Thymus

Please note: All products are 'FOR RESEARCH USE ONLY. NOT FOR USE IN DIAGNOSTIC OR THERAPEUTIC PROCEDURES'.